



CYCLING

ABOUT US

SIXS' history began in 2009 in Italy, in Bagnara di Romagna (province of Ravenna) to be more precise. An overwhelming love for sports and an in-depth knowledge of textile technologies combined together to give rise to the company. The result is a patented, extremely innovative fabric sold on the world market of sports apparel, but that is made only in Italy. A fabric that optimally interacts with the human body. It is not a barrier, but rather a "second skin" able to ensure proper insulation and manage sweat wicking.

"Innovative Solutions for Sports" is what the acronym and name SIXS stands for, so it is easy to guess how much innovation and research into the development of this product are deeply rooted.

Everything began with six simple products and no expensive advertising campaigns, but rather only the certainty of the quality and effectiveness of this Italian-made excellence. In just two years SIXS became a brand distributed in over 1,000 points of sale throughout Italy simply by offering field tests to athletes and retailers.

Growth was non-stop, and the number of items in the catalog rose to over 100. No longer is just technical underwear offered. There are also sports outerwear (Activewear) lines, impact protection (Pro Tech), as well as a Kids line and a full range of accessories. All of this is based on the use of the patented fabric that makes SIXS items incomparable in terms of quality and effectiveness.



INDEX

- 16 Underwear Light
- 22 Underwear
- 34 Underwear Warm
- 38 Merinos Wool
- 42 Activewear
- 62 Pro-Tech
- 70 Kids
- 78 X-mix
- 94 Compression
- 98 Socks
- 104 Resolvwear
- 105 Merchandising
- 106 POP
- 107 Events Support
- 108 Size Chart



Registered Trademark
PATENTED TECHNOLOGY

www.six2.com
info@six2.com

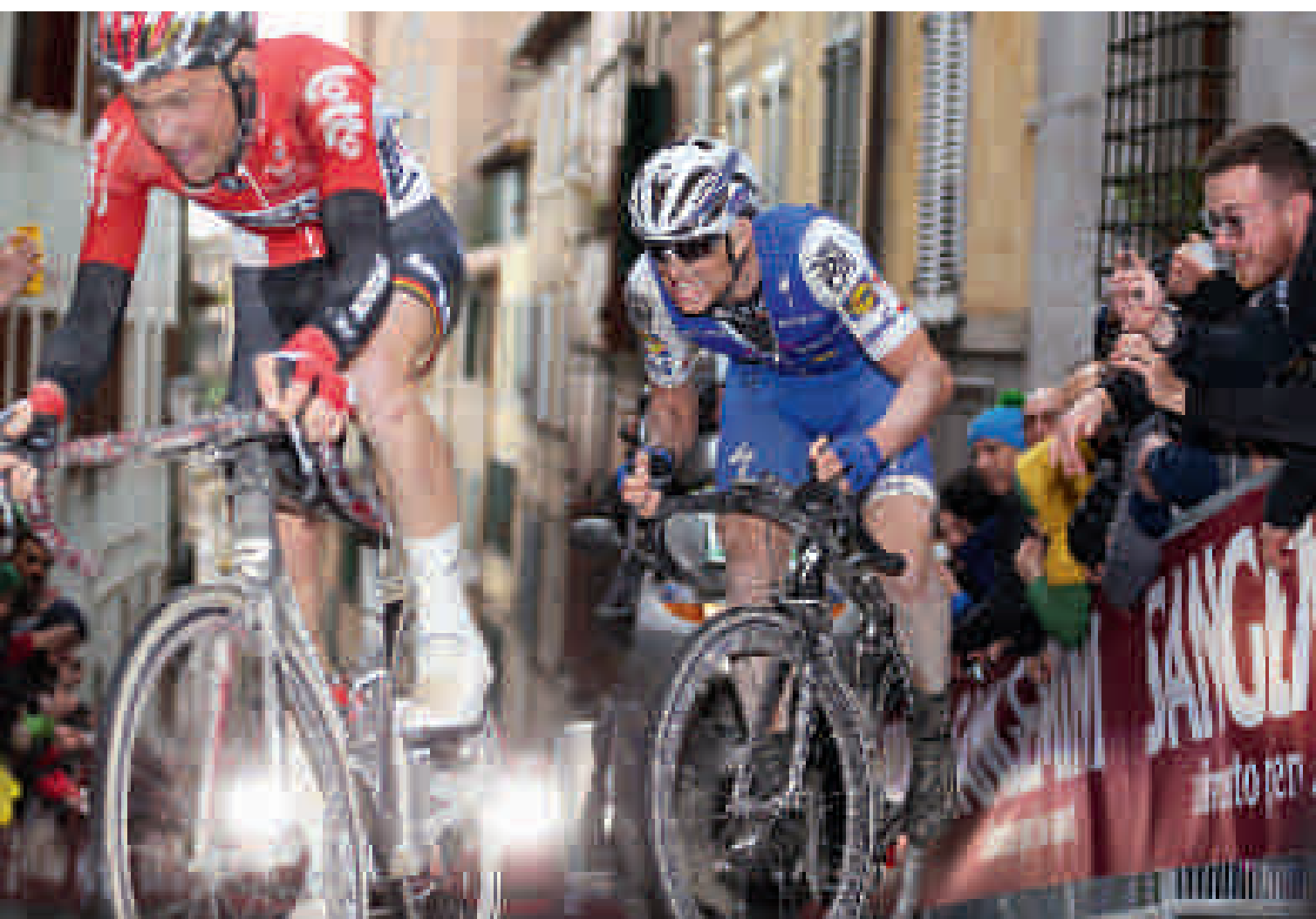
Epic challenges, incredible emotions and the hardest test a product can face: the best PRO athletes in the world.

Since 2015 with



Thanks to





YOUR SECOND SKIN

THE SECRET LIES IN THE FABRIC



WHAT MAKES US UNIQUE?

Those who still haven't had the pleasure of personally trying on a SIXS garment often ask themselves: "What is so special about these products?" The answer is very simple: it is called **Original Carbon Underwear®** and it is the patented fabric that makes our garments unique.

The result of years of research, the precise blend of technical fibers and distinctive weaving stitch ideally come together to create a fabric designed to help athletes attain a level of comfort never before experienced during their sports activities.

The configuration of Original Carbon Underwear® allows sweat to be truly taken away from the skin to the outside due to low density zones properly alternating with light pressure zones. This peculiarity ensures the athlete **correct thermal insulation** and **optimum breathability under all conditions**.

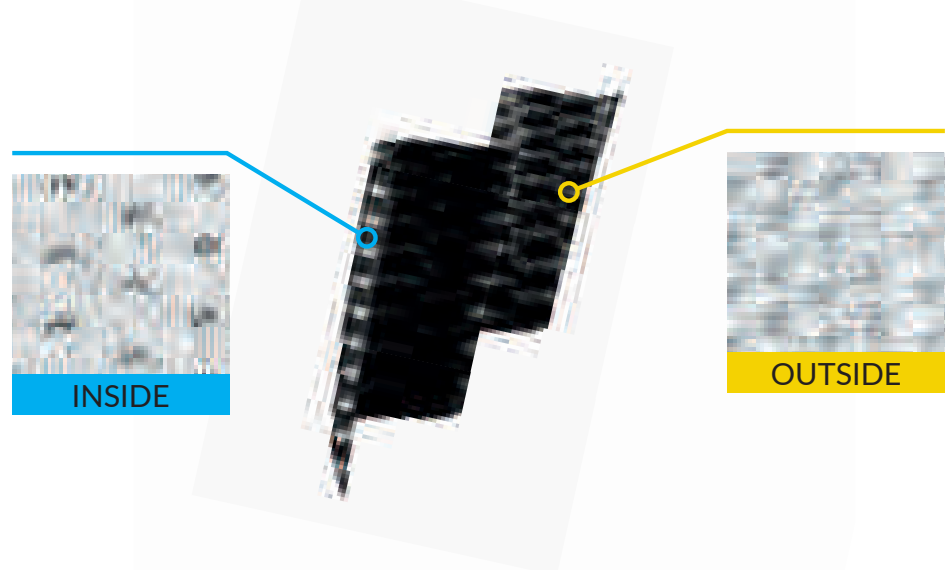
The structure of the fabric just described can be achieved only by combining the weave stitch with technical fibers, and this is why SIXS products are hard to copy.

The low density zones are created by using **carbon fiber** that not only is extremely hard-wearing and ultralight, but also boasts an enormous thermal insulation capacity (it is, in fact, commonly used in spacesuits). Its fineness in the form of textile fiber, which makes it practically invisible to the human eye, creates those micro cavities that channel sweat to the outside so the skin is left dry.

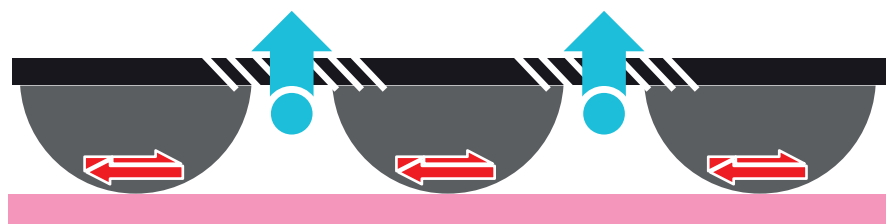
The polypropylene, polyamide fiber and polyurethane fiber, complete the blend and add essential characteristics such as: thermal insulation, water-repellency, bending and wear resistance, stretch and non-deformability.

100% MADE IN ITALY



We are proud to boast **100% Italian design and production** that represent a guarantee of a **high quality product**. This also allows us to constantly make progress as we can quickly adapt to the technical evolution of the market.







FABRIC SECTION



KEY:

 Low density zones
 Light pressure zones

 Movement
 Skin

 Moisture leakage
 Fabric

CONSTANT THERMAL INSULATION



Thanks to its blend of textile fibers, the Carbon Underwear® fabric is just like a breathable barrier that keeps the body temperature constant under all weather conditions.

HEAT LOSS CAPACITY

HEAT TRANSFER RATES

CARBON UNDERWEAR®		6
PES		8
WOOL		8,4
NYLON		12,6
COTTON		20,1

MAXIMUM BREATHABILITY



The patented SIXS weave stitch and the polypropylene found in our fabric create a perfect combination: a lower liquid absorption rate and a greater water vapor permeability than other textile fibers.

SWEAT WICKING INDEX

CARBON UNDERWEAR®		100
PES		72
NYLON		71
COTTON		60
WOOL		56

BACTERIOSTATIC

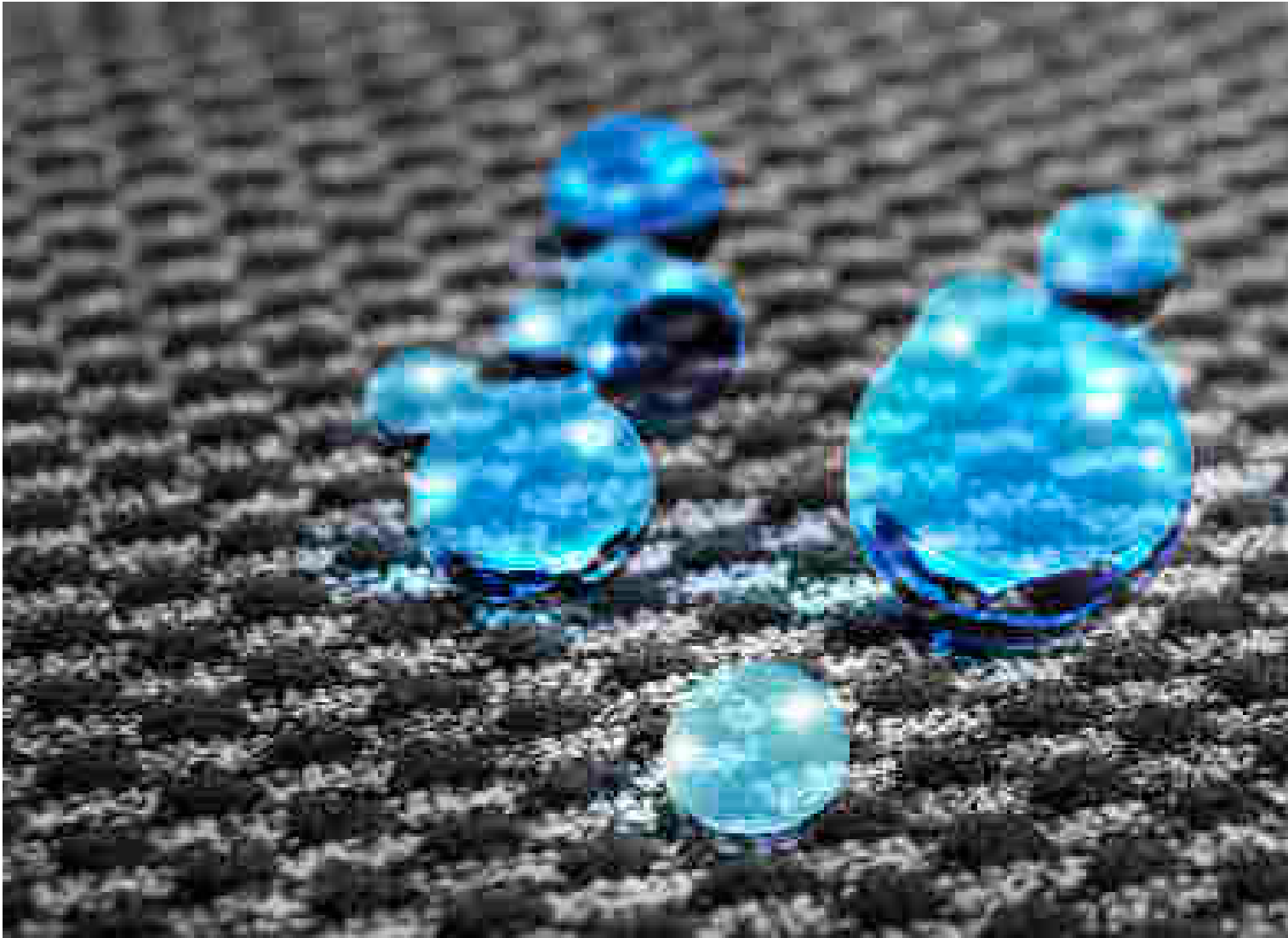


Because it respects the skin and protects it from bacteria and pollutant dusts: the Carbon Underwear® fabric has properties that eliminate the risk of annoying allergies, reduce the proliferation of bacteria and the procreation of bad smells.

ANTISTATIC



Because of its conductivity, the fiber absorbs and disperses electric charges accumulated from the environment or during physical exercise.



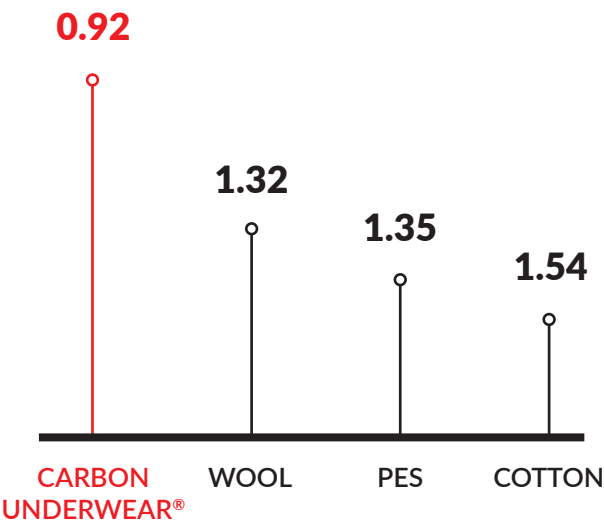
LIGHT AS A FEATHER



The Carbon Underwear® fabric has the lowest specific weight of all textile fibers on the market.

LIGHTNESS

TEXTILE FIBERS IN G/CM³ · SPECIFIC WEIGHT



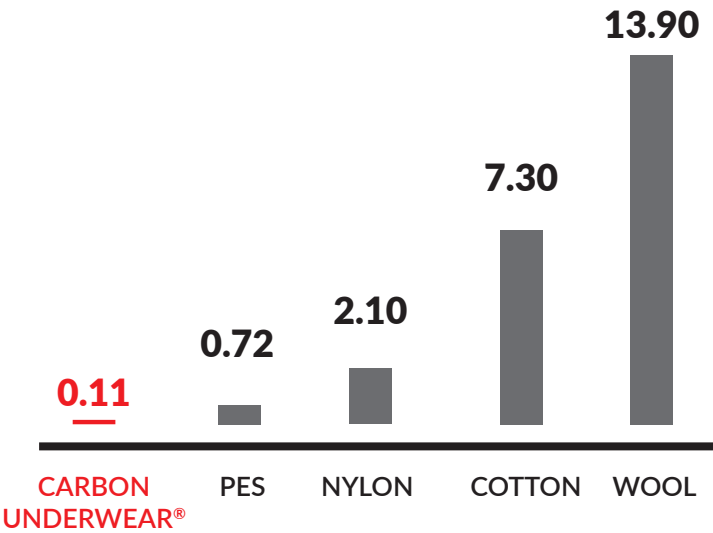
FAST DRYING



The fabric does not absorb sweat, but rather carries it to the outside so that the skin is left dry. The garments dry quickly after being washed.

LIQUID ABSORPTION RATE

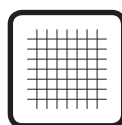
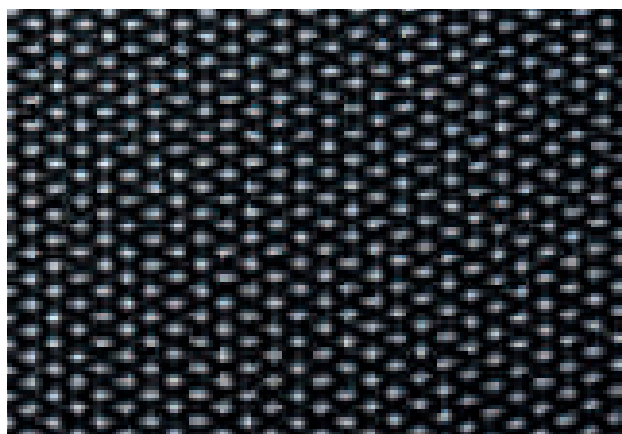
LIQUID ABSORPTION RATE WATER CONTENT GIVEN AS A PERCENTAGE OF THE DRY PRODUCT WEIGHT



MATERIALS



CARBON COMPARISON



SuperLight
Carbon Underwear®
breathability $< 2,5 \text{ m}^2\text{Pa/W}$

LIGHTER

36%



Carbon Underwear®
(four-season fabric)
breathability $< 3 \text{ m}^2\text{Pa/W}$



Thermo
Carbon Underwear®
breathability $< 3,5 \text{ m}^2\text{Pa/W}$

DENSER

45%

Between 2009 and 2014 Carbon Underwear® was the only fabric that SIXS used to make the Underwear line as it proved to be ideal for both summer and winter. This is why we call it "4 Seasons".

Our R&D laboratories were able to start from this excellent starting point to create another two fabrics that are able to exalt breathability in the one case, and thermal insulation in the other.

They are **SuperLight Carbon Underwear®** and **Thermo Carbon Underwear®**. The first was designed to create the Underwear Light line specific for the summer and warm climates, while the other forms the Underwear Warm line, the perfect ally for winter cold.



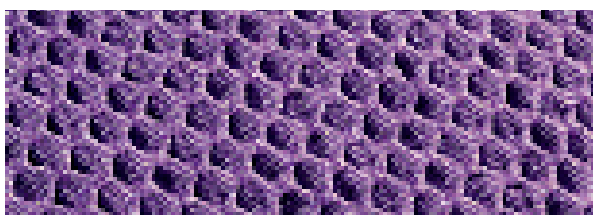
EXTRA PLUMA BARRIER



Fabric consisting of two ultrathin layers to get an incredibly lightweight membrane with a much lower specific weight, but that is breathable and protects against severe weather conditions.

- waterproof: >8000 mm water column
- breathability <7 m²Pa/W

ATOM ACTIVEWEAR



Fabric with a 3D honeycomb structure, 100% polypropylene, for maximum breathability and sweat wicking.

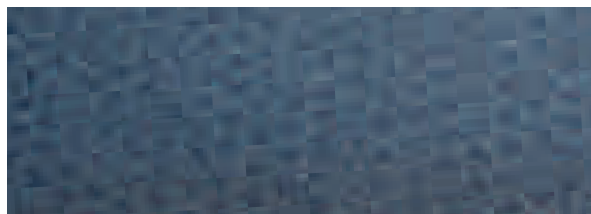
BOUNCE BARRIER



Windproof and waterproof membrane that is also resistant to stretching and tearing.

- composition: 45% PES, 55% PU, BREATHABLE
- waterproof: 5,000 mm water column

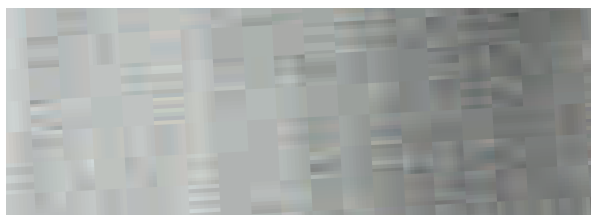
HONEYCOMB



Lightweight, breathable, windproof and water repellent, with an organic DWR (Durable Water Repellent) non-fluorine treatment. The interior has a honeycomb structure to collect moisture and convey it towards the exterior

- waterproof: 8,000 mm water column

CARBON MERINOS WOOL



The polypropylene layer in contact with the skin prevents accumulation of perspiration, providing unmatched comfort. The merino wool is properly placed in the outer layer to act as a barrier.

- breathability <6 m²Pa/W

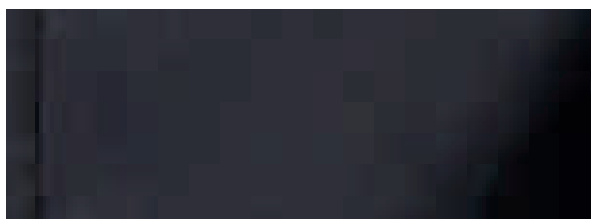
POLARTECH ACTIVEWEAR



Bonded winter fabric: on the inside, the polypropylene carries moisture to the outside and keeps the body warm and dry. The external polyester coating provides waterproofing and airtightness.

- waterproof >10,000 mm water column
- airtightness <1 mm/sec
- breathability: <16 m²Pa/W

TD SHIELD



Windproof and water-repellent polyester membrane.

- waterproof: >10,000 mm water column
- breathability <18 m²Pa/W

TECHNOLOGIES





ANTIBACTERIAL FIBER

Polypropylene fiber prevents foul odors and annoying irritations due to build-up of perspiration and chafing from forming



ANTISTATIC SYSTEM

The carbon yarn isolates the static electricity caused by the rubbing of fabrics



SEAMLESS TECHNOLOGY

Less seams for an absolute comfort



3D TECHNOLOGY

3D honeycomb structure



COMPRESSION TECHNOLOGY

Graduated compression to stimulate oxygenation and blood circulation, which help recovery and boost power



INTELLIGENT SAFE PROTECTION

Thanks to the special impact-sensitive protectors, the product is soft and pliant, so it perfectly adapts to the body's anatomy. The protectors stiffen at the time of impact and absorb the force of impact



HYDROPHOBIC WEAVE

It carries moisture to the outside so it can evaporate. The skin is always dry and thermal insulation is constant



PLUMA INNOVATION

Ultra-light product



SPF 50

Sun Protection SPF 50+



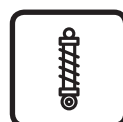
MERINO WOOL

Product containing merino wool



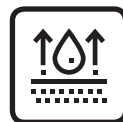
BRAINY POSITION

Mix of breathable and windproof fabrics positioned at optimal areas to ensure product functionality



CUSHION

Cushioning pads



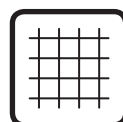
WATERPROOF PRIME

Waterproof and breathable product



HIGH VISIBILITY

Reflecting inserts for maximum visibility



GRID-TECH

Very high level of breathability owing to the large mesh structure



AIR SHIELD

Breathable windproof protection

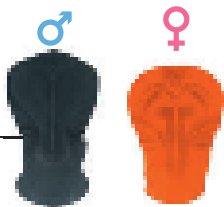
COMFORTABLE SITTING



ENDURANCE PAD

3
DENSITY

8h



Butt-patch designed for long distances (over 8 hours of riding).

The triple-density construction guarantees lasting comfort throughout the session: a 4 mm foam base, with 3 additional mm of material in the support zone, and 8 mm in the ischial zone.

SKYVE technology keeps the pad's thickness to a minimum, creating a perfect ergonomic contour to prevent chafing while pedaling. The Zig Zag Carbon fabric has extraordinary insulation and antistatic properties, which make it quick-drying and breathable.

TWIN PADDED TECHNOLOGY

2
DENSITY

4/5h



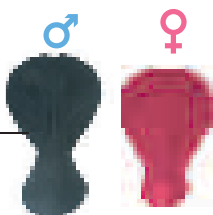
Revolutionary butt-patch technology for long distances and for off-road/gravel. The pad is inserted into the shorts without any overlapping of fabric, so that is in direct contact with the seat. This method reduces chafing.

The butt-patch is composed of two foams designed to work synergistically: the outside base, with a density of 65 kg/m³ and a thickness of 3 mm, ensures optimal freedom of movement and incredible elasticity, while preventing chafing caused by fabric rubbing against the seat. The inside foam has a density of 85 kg/m³ and a thickness of 12 mm, perforated to guarantee optimal breathability and moisture wicking.

RACE PAD

2
DENSITY

6h



Butt-patch designed for medium distances (over 6 hours of riding). Double-density construction ensures exceptional comfort while eliminating energy dispersion: a 4 mm foam base, with 8 additional mm of foam in the support zone, with a density of 110 kg/m³ for uniform protection at all of the body's points of contact. The antibacterial fabric with its characteristic interlocking twisted-mesh structure provides natural micro-ventilation, allowing for quick drying and perfect thermal insulation.

AGILE PAD

2
DENSITY

3h



Medium-density butt-patch that is comfortable and versatile for all uses. It is designed for short to medium distances (up to 3h of non-stop pedaling).

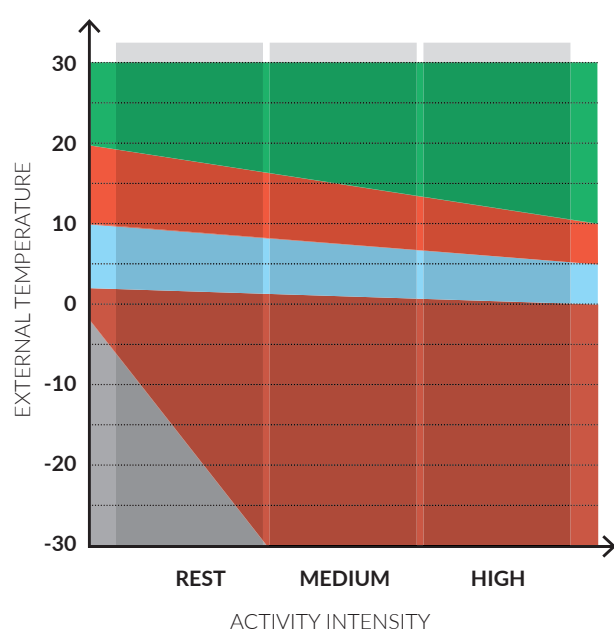
It boasts a thin design to take up minimum space, is very flexible, and it has a double padding layer (4 mm thick in the outermost part, while the center zone arrives at 8 mm) to guarantee adequate shock absorption for road cycling and outdoor activities.

TEMPERATURE AND INTENSITY



The two main factors that determine the choice of one product over another are the level of physical activity (such as intensity of effort) and the temperature of the environment in which the product will be used.

TO UNDERSTAND THE RECOMMENDED USE OF SIXS BASE LAYER PRODUCTS, YOU CAN REFER TO THIS CHART



KEY:

- UNDERWEAR LIGHT
- UNDERWEAR
- UNDERWEAR WINDSHELL
- UNDERWEAR WARM
- MERINOS WOOL





**SUPER
BREATHABLE
BATTLE THE
EXTREMES
OF HEAT AND
HUMIDITY**

UNDERWEAR LIGHT



Philippe Gilbert - Paris-Roubaix 2019
Credits: © Getty Images

INCREDIBLY LIGHTWEIGHT

The products of the SIXS Underwear Light line are suitable for all sports undertaken in **high temperature conditions**.

Worn in direct contact with the skin and underneath normal sports clothing, these garments keep the skin always dry because they eliminate moisture and the consequent feeling of dampness.

Now thanks to the Underwear Light line underwear will no longer be an optional, even on muggy days. **By avoiding sudden chills** (due to sweat or damp fabric in contact with the skin), **comfort will always be guaranteed while considerably reducing muscle injuries**.

SUPERLIGHT CARBON UNDERWEAR®

New fabric with a lighter weave coming from experience gained in extreme sports competitions (such as the Dakar, for example), with weather conditions that push the body to temperatures on the borderline of human tolerance.

Derived from the patented fabric Carbon Underwear, carefully altered to give way to incredibly lightweight products (**-36% in weight!**) **Ultimate breathability** to guarantee comfort even at high temperatures.

MESH SLEEVELESS JERSEY

For those who need minimal, fresh and lightweight clothing.

GRID-TECH technology: prevent annoying chafing and create cushions of fresh air that reduce the sensation of the skin "suffocating" under the garment.

The polyamide fiber with its extremely low specific weight is able to absorb the skin's moisture to leave it fresh and dry.

FEATURES

Breathability:	—	—	—	—
Insulation:	—	—	—	—
Wind protection:	—	—	—	—
H ₂ O protection:	—	—	—	—

SIZES

One size fits all
* BIG SIZE only in BLACK and WHITE

ATTRIBUTES



WEATHER



CODE **SMR2**



BLACK *



WHITE *



YELLOW
TOUR



RED



BLUE



VIOLET



PETROLEUM





SUPERLIGHT CARBON UNDERWEAR JERSEYS

Designed for the hot season, when suffocating heat and humidity give no respite.

SuperLight Carbon Underwear fabric, 36% lighter than Carbon Underwear (material with which the 4 Seasons Underwear line is made).

Helps maintain the right body temperature, by taking sweat (and heat along with it) to the outside without absorbing it - light protection from cold currents.

Tight fit for wearing underneath outerwear.

FEATURES		SIZES	
Breathability:	■ ■ ■ ■ ■	XS, S, M, L, XL, XXL	
Insulation:	■ ■ ■ ■ ■	* XS/S, M/L, XL/XXL	
Wind protection:	■ ■ ■ ■ ■		
H ₂ O protection:	■ ■ ■ ■ ■		



CODE **SML2**



BLACK
CARBON



WHITE
CARBON



VIOLET*



PETROLEUM*



CODE **TS1L**



BLACK
CARBON



WHITE
CARBON



VIOLET*



PETROLEUM*

ATTRIBUTES

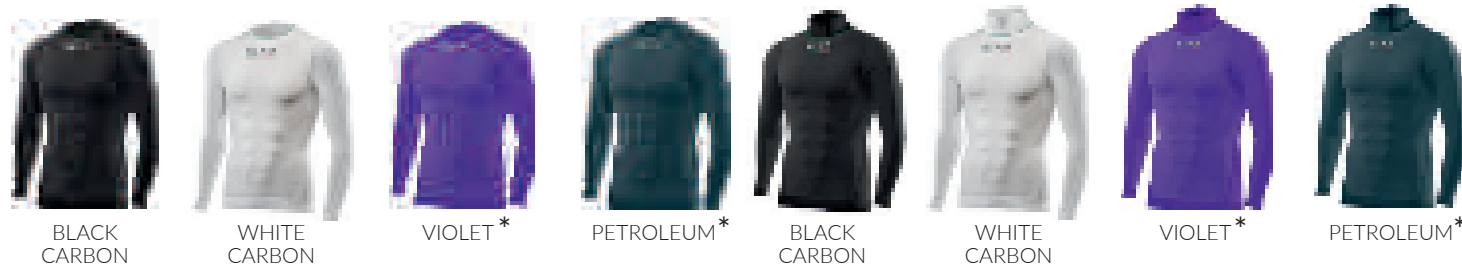


WEATHER



CODE **TS2L**

CODE **TS3L**





UNDERWEAR

**SUITABLE
FOR ALL
SPORTS,
ALL YEAR
ROUND**

THE IRREPLACEABLES

The products in the SIXS Underwear line are suitable for all sports, all year round. Perfect in all circumstances involving physical activity, all of the garments in this range are meant to be **worn in direct contact with the skin, underneath the usual sports clothing.**

Owing to their incredible insulation and breathability characteristics, SIXS garments always keep the skin dry, because they eliminate

moisture and the consequent feeling of dampness. This is why Underwear is no longer considered an *optional* during sports activities. **By avoiding sudden chills** (due to perspiration or damp fabric in contact with the skin), **comfort will always be guaranteed while considerably reducing muscle injuries.**

4 SEASONS CARBON UNDERWEAR JERSEYS

Essential products suitable for all conditions, (both indoors and outdoors).
Skin is always dry and fresh during competition and when training, for any sport.
The lightest and most breathable polypropylene fiber on the market, combined with a real carbon yarn, which provides heat transmission and possesses antistatic properties to protect the body from the electric charge caused by rubbing multiple synthetic fabrics against each other (condition typical of sports clothing).
Tight fit for wearing underneath outerwear.

FEATURES

Breathability:	— — — — —
Insulation:	— — — — —
Wind protection:	— — — — —
H ₂ O protection:	— — — — —

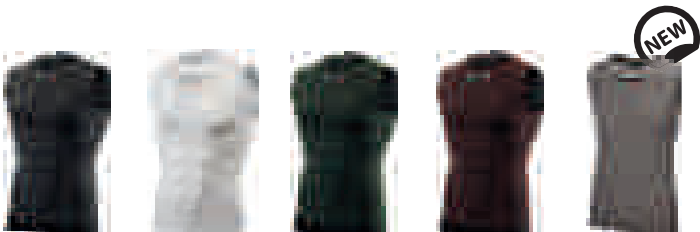
SIZES

XS, S, M, L, XL, XXL
(BIG SIZE only in BLACK CARBON)
* XS/S, M/L, XL/XXL

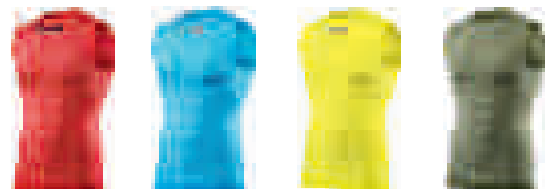


CODE **SMX**

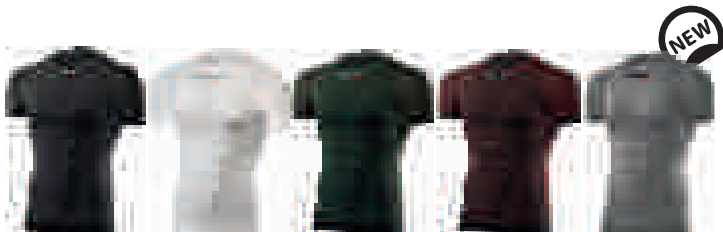
CODE **TS1**



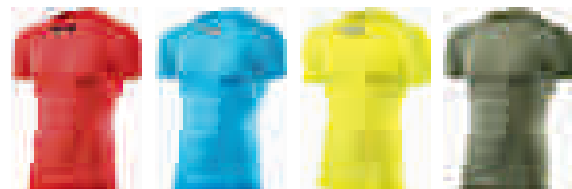
BLACK CARBON WHITE CARBON DARK GREEN DARK RED DARK GREY *



RED * LIGHT BLUE * YELLOW TOUR ARMY *



BLACK CARBON WHITE CARBON DARK GREEN DARK RED DARK GREY *



RED * LIGHT BLUE * YELLOW TOUR * ARMY *

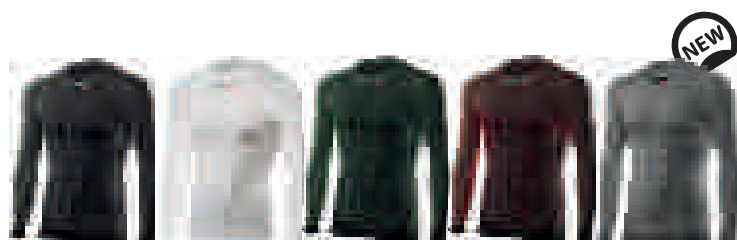
ATTRIBUTES



WEATHER



CODE **TS2**



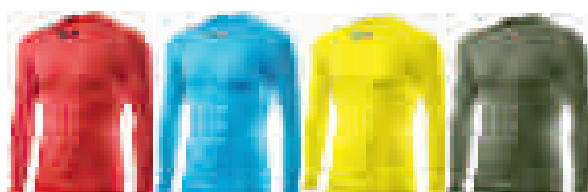
BLACK
CARBON

WHITE
CARBON

DARK
GREEN

DARK
RED

DARK *
GREY



RED *

LIGHT
BLUE *

YELLOW
TOUR *

ARMY *

CODE **TS3**



BLACK
CARBON

WHITE
CARBON

DARK
GREEN

DARK
RED

DARK *
GREY



RED *

LIGHT
BLUE *

YELLOW
TOUR *

ARMY *



WOMEN'S TECHNICAL CARBON UNDERWEAR

Sport bra and girl sleeveless for female athletes looking for comfort and maintains the ideal temperature.

Shaped cups with total coverage, medium support thanks to a specific weave of fabric and the elastic under the breast for a better fit and support.

The SIXS Carbon Underwear fabric protects the skin from the build-up of perspiration, even during the hottest periods of the year.

So there are no more unexpected chills or cold, since the moisture will be far away from the body.

FEATURES

Breathability:	— — — — —
Insulation:	— — — — —
Wind protection:	— — — — —
H ₂ O protection:	— — — — —

SIZES

S/M, L/XL

ATTRIBUTES



WEATHER



CODE **RG2**



BLACK
CARBON



GREY

CODE **SMG**



BLACK
CARBON



GREY

CARBON UNDERWEAR BOXERS

Suitable for sporting activity on a seat but also for everyday use (urban): seamless technology reduces the number of seams, increasing comfort. The SIXS Carbon Underwear fabric not only guarantees excellent breathability and thermal insulation, but has antibacterial properties as well. The result is that the skin is always dry and there is no damp feeling.

FEATURES

Breathability:	— — — — —
Insulation:	— — — — —
Wind protection:	— — — — —
H ₂ O protection:	— — — — —

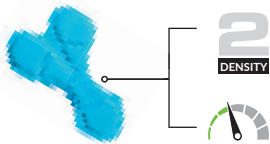
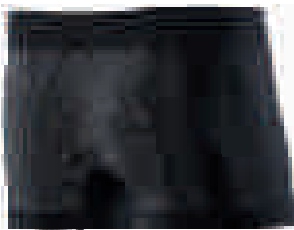
SIZES

S, M, L, XL, XXL

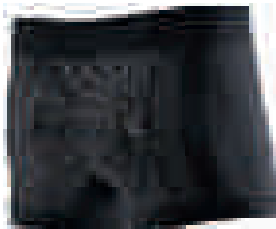
ATTRIBUTES



WEATHER



AGILE PAD BUTT-PATCH
More info on page 14



CODE **BOX**

CODE **BOX2**



BLACK
CARBON



BLACK
CARBON



WIND SHELL



WIND PROTECTION ACCORDING TO SIXS

Acting on the need to provide increased protection from air in the front zone of the body, we have inserted the exclusive **AIR SHIELD** system into several products. It is an extremely effective windproof protection without

membrane, to maintain a very high degree of sweat wicking, in this way preventing the classic "greenhouse effect".

SHORT SLEEVES WINDSHELL JERSEYS

Short sleeve jerseys with windproof WindShell Carbon Underwear protection, ideal for outdoor sports.

SIXS Air Shield technology protects the torso from cold air in the front. A thin layer of breathable windproof fiber creates a micro air cushion that protects the body without causing the classic "greenhouse effect" that increases perspiration.

The rest of the product is in SIXS Carbon Underwear fabric, breathable and thermoregulating in any weather condition.

FEATURES

Breathability:	— — — — —
Insulation:	— — — — —
Wind protection:	— — — — —
H ₂ O protection:	— — — — —

SIZES

XS, S, M, L, XL, XXL

ATTRIBUTES





WEATHER



AIR SHIELD
Shielded area



AIR SHIELD
Shielded area



CODE **TS5**



CODE **TS7**



LONG SLEEVES WINDSHELL JERSEYS

Long sleeve jerseys with windproof WindShell Carbon Underwear protection, ideal for outdoor sports.

SIXS Air Shield technology protects the torso from cold air in the front. A thin layer of breathable windproof fiber creates a micro air cushion that protects the body without causing the classic “greenhouse effect” that increases perspiration.

The rest of the product is in SIXS Carbon Underwear fabric, breathable and thermoregulating in any weather condition.

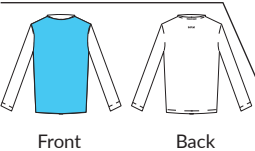
FEATURES

Breathability:	— — — — —
Insulation:	— — — — —
Wind protection:	— — — — —
H ₂ O protection:	— — — — —

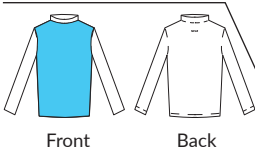
SIZES

XS, S, M, L, XL, XXL
(BIG SIZE only for TS4)

AIR SHIELD
Shielded area



AIR SHIELD
Shielded area



CODE **TS6**

CODE **TS4**



ATTRIBUTES

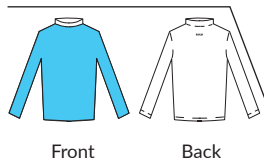


WEATHER



AIR SHIELD

Shielded area



Front

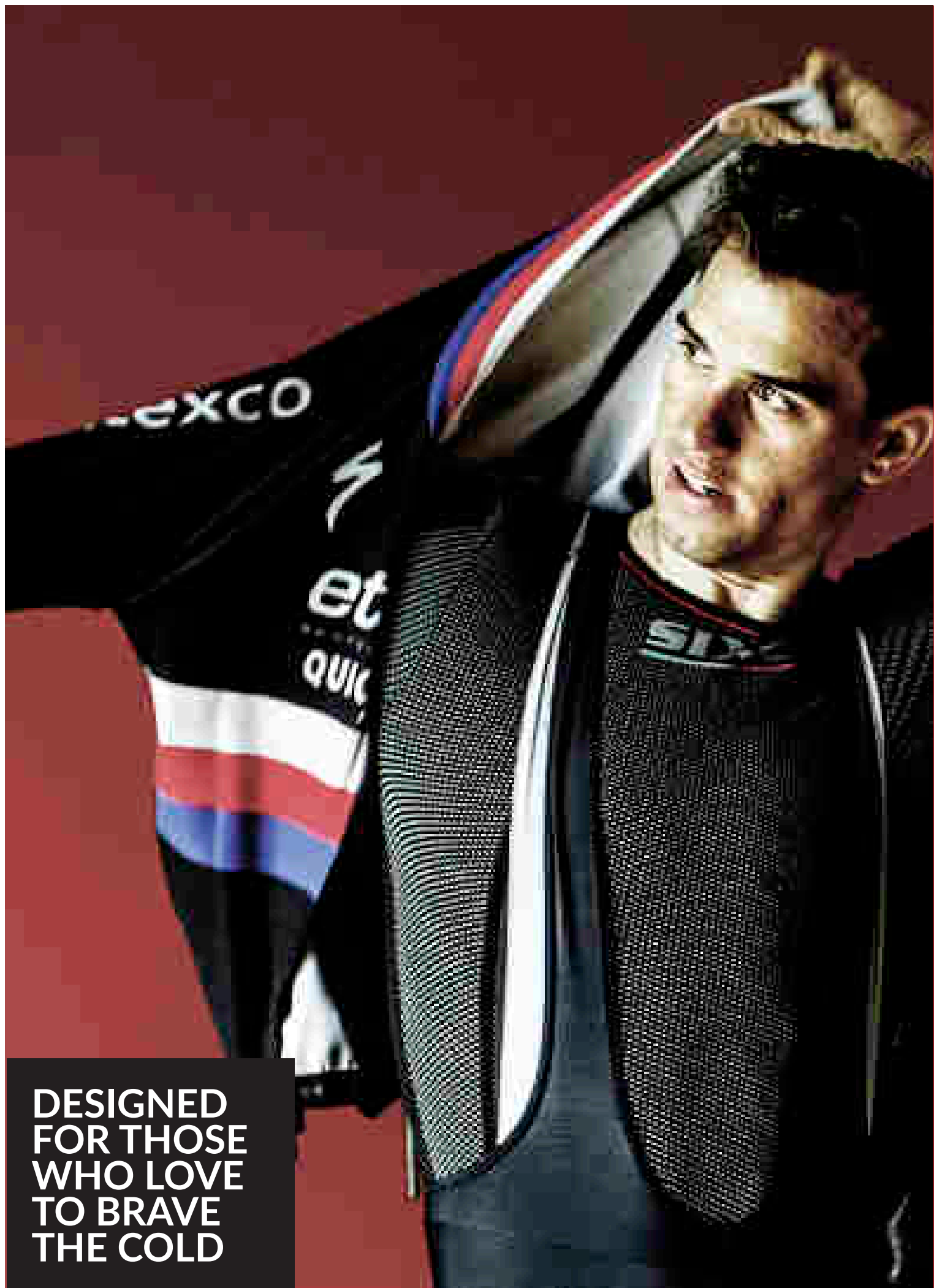
Back



CODE **TS4 PLUS**



BLACK
CARBON



DESIGNED
FOR THOSE
WHO LOVE
TO BRAVE
THE COLD

UNDERWEAR WARM

CONTROL WINTER

The garments in the SIXS Underwear Warm line are suitable for all sports undertaken in **harsh temperature conditions**.

Worn in direct contact with the skin and underneath normal protective sports clothing, these garments keep the body temperature properly regulated and the skin always dry, because they eliminate moisture and the consequent feeling of dampness.

Why wear 3 or 4 layers when you can feel at the right temperature by just using the Underwear Warm line garments with your outerwear?

Changes in temperature will no longer be a problem either. **By avoiding sudden chills** (due to perspiration or damp fabric in contact with the skin), **comfort will always be guaranteed while considerably reducing** muscle injuries.

THERMO CARBON UNDERWEAR®

Derived from the patented Carbon Underwear®, this new fabric, with a **45% denser** weave, has been carefully altered to keep **insulation constant** without limiting the **perspiration** of the body in extreme cold conditions.

WINTER THERMO CARBON
UNDERWEAR JERSEYS

Designed for low temperatures (below 5°C), they allow the athlete not to waste precious energy to warm the body.

In these conditions, it is essential to wear an “enhanced” product that manages the body temperature by conveying any sweat to the exterior without absorbing it.

Total protection is provided by Thermo Carbon Underwear fabric, 45% denser than Carbon Underwear (material with which the 4 Seasons Underwear line is made).

FEATURES

Breathability:	— — — — —
Insulation:	— — — — —
Wind protection:	— — — — —
H ₂ O protection:	— — — — —

SIZES

XS, S, M, L, XL, XXL



CODE **TS2W**

CODE **TS3W**



BLACK
CARBON



BLACK
CARBON

ATTRIBUTES



WEATHER



Mock turtleneck
with zipper



CODE **TS13W**



BLACK
CARBON

MERINOS WOOL

THE SECRET FORMULA

After the huge success of the two models of socks (LUXURY MERINOS and ARROW MERINOS) whose composition included merinos wool, we decided to expand the range of products by creating a special line: MERINOS WOOL.

Specific winter line with wool thermal regulation properties, which are superior to any other natural fiber and therefore acts in an excellent way as a barrier against the cold!

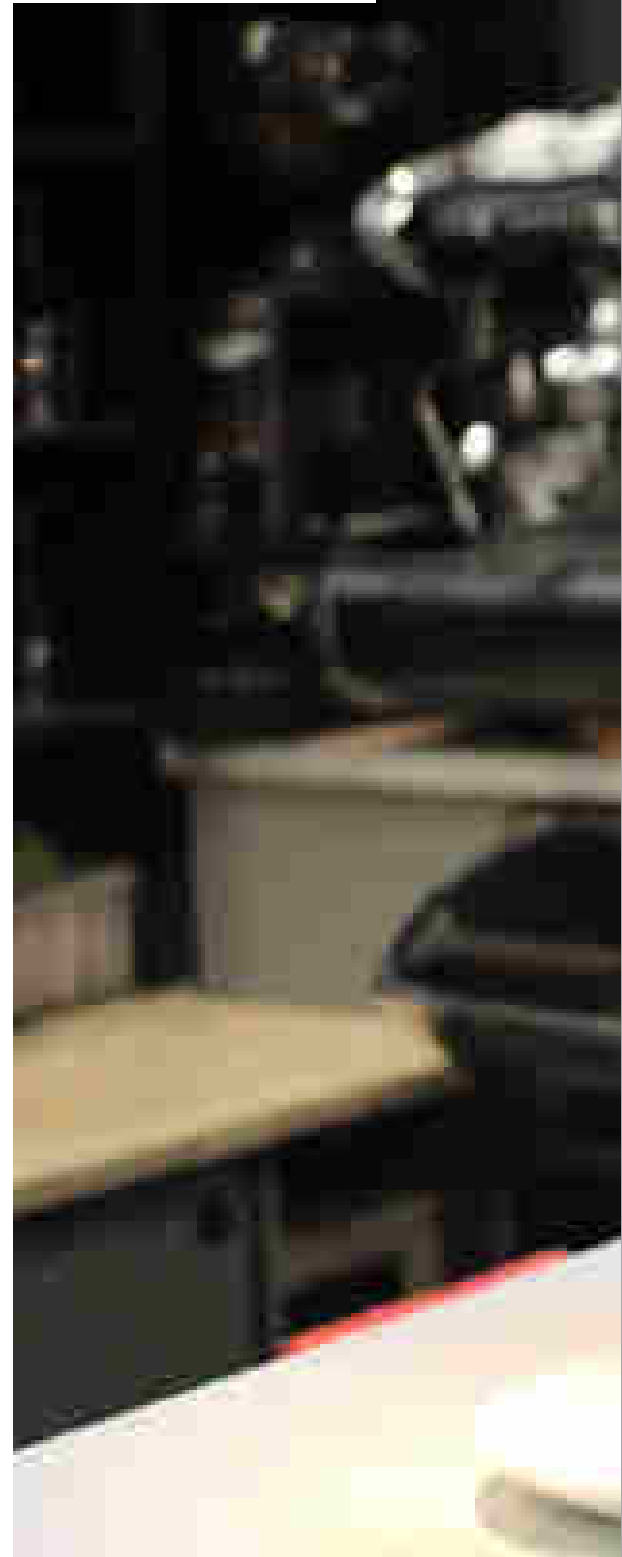
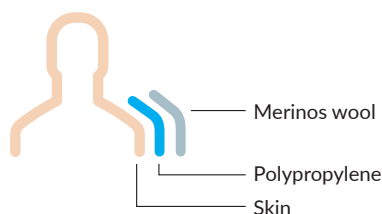
POSITION OF MATERIALS

We wanted the comfort of the product when worn to be the same as that of the other products making up the SIXS catalog.

For this reason we decided to put polypropylene inside, in direct contact with the skin, and keep the merinos wool (known to be a bit rougher and bristlier than other yarns) outside.

The wool has heat regulation properties that are superior to any other natural fiber, and it acts as a barrier against cold.

Polypropylene, on the other hand, is a hydrophobic yarn, meaning it does not absorb liquids and optimally manages perspiration.





**DON'T
FEAR
THE
WINTER!**

CARBON MERINOS WOOL BASELAYERS

Extremely versatile, sober look, comfortable to wear. Ideal for use as baselayer or an intermediate layer at low temperatures.

Although the weight of the fabric is decidedly low (only 164g/m²), merino wool acts as a natural barrier against the cold.

Placing it outside the tissue, we have eliminated the classic problem of itching; the layer of polypropylene in contact with the skin avoids the accumulation of sweat, giving unparalleled comfort.

FEATURES

Breathability:	— — — — —
Insulation:	— — — — —
Wind protection:	— — — — —
H ₂ O protection:	— — — — —

SIZES

S/M, L/XL, XXL/XXXL



CODE TS2 MERINOS

CODE TS3 MERINOS



WOOL GREY WOOL ANTHRACITE WOOL BLUE



WOOL GREY WOOL ANTHRACITE WOOL BLUE

ATTRIBUTES




NO


NO


NO


SLIM

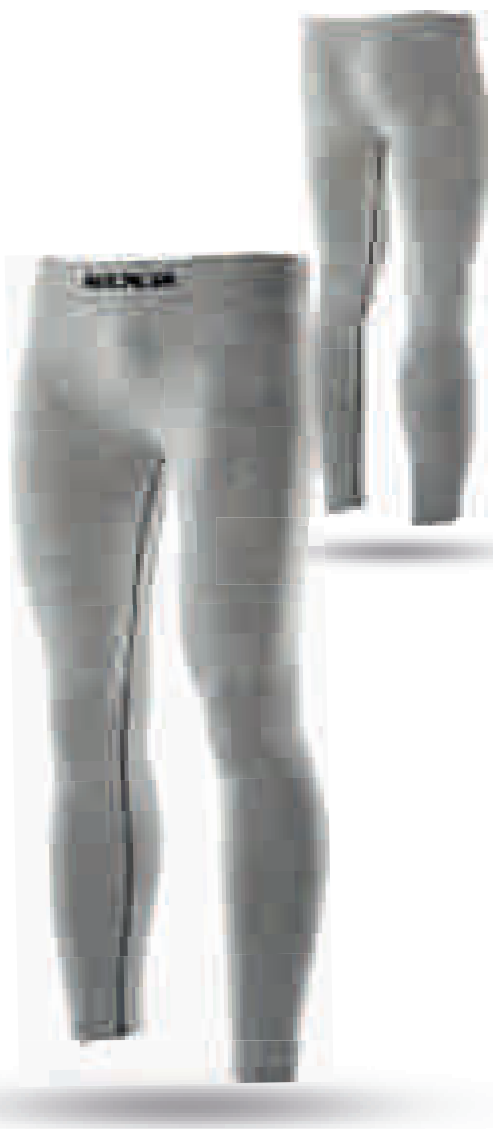
WEATHER







CODE TS13 MERINOS



CODE PNx MERINOS





BE ACTIVE
BE SIXS

ACTIVE WEAR



SIXS TOTAL LOOK

The Activewear line brings the technology and benefits of our Underwear to outerwear products as well thanks to the innovative **SIXS Carbon Activewear** fabric. The formulation is the same, but the weight is specifically designed to be worn as an outer garment. The Activewear garments can be

combined with the Underwear line, enhancing the outstanding qualities of SIXS textile technology.

ACTIVEWEAR BIKE

Activewear collection dedicated to cycling, revolutionized and expanded with new products and colors. Bib Tights and Bike Jerseys made of Carbon Activewear are ideal to be worn in direct contact with skin or over a garment of the Underwear line. Complete your style. Create your total SIXS look.



THE MESH OF THE FUTURE

Cycling jersey for the most torrid summer: whether you are making a maximum effort during a competition, whether you are walking on a sunny summer day, this shirt will be your faithful ally.

A lightweight frontal mesh allows to expel all the excess heat.

The Light Carbon Activewear panel on the back with carbon filament thermoregulates the body temperature and keeps the skin dry and fresh in the areas most exposed to sunlight.

FEATURES

Breathability:	— — — — —
Insulation:	— — — — —
Wind protection:	— — — — —
H ₂ O protection:	— — — — —

SIZES

S, M, L, XL

ATTRIBUTES



WEATHER



CODE **SERRA JERSEY**



DARK
SHADOW



WHITE
PETROLEUM





ULTRALIGHT SHORT-SLEEVE BIKE JERSEY

The CLIMA Jersey is our lightest and coolest cycling jersey, designed to be worn either in direct contact with the skin or on top of an underwear product, if the temperature is cooler. The funnel-like weave stitch helps to convey moisture to the outside, leaving the skin fresh and dry.

Seamless technology, with no seams against the torso, means perfect adherence and wearability, without irritating contact points.

Reflective insert to increase visibility and a practical pocket with three compartments.

FEATURES

Breathability:	— — — — —
Insulation:	— — — — —
Wind protection:	— — — — —
H ₂ O protection:	— — — — —

SIZES

S, M, L, XL

ATTRIBUTES



WEATHER



3D BIKE JERSEY

The QUOTA Jersey is a short-sleeve cycling jersey that combines proven Carbon Activewear technology with extraordinary 3D inserts in the areas most prone to sweating, to promote expulsion of moisture and body heat.

The 3D fabric's seamless workmanship forms a mesh structure, which has been ideally positioned following careful testing to show which areas are most prone to heat and perspiration generation during sports activities. The insert imperceptibly lifts the fabric of the jersey off of the body. Reflective insert to increase visibility and a practical pocket with three compartments.

FEATURES

Breathability:	— — — — —
Insulation:	— — — — —
Wind protection:	— — — — —
H ₂ O protection:	— — — — —

SIZES

S, M, L, XL

ATTRIBUTES



WEATHER



CODE CLIMA JERSEY



GREY
BLACK



MOULINE
GREY



AVIO
LIGHT BLUE



MELANGE
WAVE/BLACK



MELANGE
FIRE



YELLOW
BLACK



YELLOW
WHITE

CODE QUOTA JERSEY



GREY
BLACK

SHORT-SLEEVE BIKE JERSEY
CARBON ACTIVEWEAR

The technology of our baselayer even on outerwear garments: owing to the properties of Carbon Underwear, the skin is always dry and thermal insulation is ensured.

This short-sleeve jersey can be worn both in direct contact with the skin or on top of an underwear product.

The skin is free to breathe, without layered fabric that suffocates it, and this guarantees effective performance and unmatched comfort.

FEATURES

Breathability:

Insulation:

Wind protection:

H₂O protection:

SIZES

XS, S, M, L, XL

ATTRIBUTES

NO

NO

NO

SF 50

SLIM

WEATHER



CODE **FANCY JERSEY**

CODE **CHROMO JERSEY**



GEOMETRIC



COMICS



BOHO



RED&BLUE



BLACK



ULTRALIGHT SHORT LEG BIB TIGHT

The CLIMA Bibshort is our lightest and coolest model of cycling shorts.

The funnel-like weave stitch helps to convey moisture to the outside, leaving the skin cool and dry.

Seamless technology, with no seams on the sides, means perfect adherence and wearability, without irritating contact points.

Elastic straps in netted mesh provide one-of-a-kind coolness and comfort.

Available with "Endurance Pad" seat pad or with the "Off-Road" seat pad.

FEATURES

Breathability:	— — — — —
Insulation:	— — — — —
Wind protection:	— — — — —
H ₂ O protection:	— — — — —

SIZES

S, M, L, XL

ATTRIBUTES



WEATHER



CODE CLIMA BIB



BLACK GREY AVIO LIGHT BLUE ARMY MELANGE FIRE BLACK MELANGE FIRE BLACK ORANGE BLACK YELLOW



More info on
p. 14

ULTRALIGHT WOMAN SHORT LEG BIB TIGHT

WOM CLIMA Bibshort is our light and cool women's specific cycling shorts.

It adapts perfectly to the female anatomy with a single strap that connects the two parts on the chest. The funnel-like weave stitch helps to convey moisture to the outside, leaving the skin cool and dry.

Seamless technology, with no seams on the sides, means perfect adherence and wearability, without irritating contact points.

Women's "Endurance Pad" seat pad.

FEATURES

Breathability:	— — — — —
Insulation:	— — — — —
Wind protection:	— — — — —
H ₂ O protection:	— — — — —

SIZES

S, M, L, XL

ATTRIBUTES



WEATHER



CODE WOM CLIMA BIB



AVIO LIGHT BLUE



More info on
p. 14

SHORT LEG BIB TIGHT

The 2020 model of the CHROMO BIB represents a significant evolution compared to last year's model, our best-selling shorts ever. There is a new 3D textile stitch on the leg and in the area above the groin, which increases its stability but without reducing its elasticity, wrapping the body perfectly without pressure points. The properties of the Carbon Activewear weft combined with the comfort of an anatomical seamless product, without seams on the sides and back, create a one-of-a-kind bib. Always fresh and dry skin, for maximum comfort in all conditions. Configurable with "Race Pad" or with "Off-Road" seat pad.

FEATURES	SIZES
Breathability: <div><div></div><div></div><div></div><div></div><div></div></div>	S, M, L, XL
Insulation: <div><div></div><div></div><div></div><div></div><div></div></div>	
Wind protection: <div><div></div><div></div><div></div><div></div><div></div></div>	
H ₂ O protection: <div><div></div><div></div><div></div><div></div><div></div></div>	
ATTRIBUTES	WEATHER
<div></div> <div></div> <div></div> <div></div> <div></div>	<div></div> <div></div>



CODE **CHROMO BIB 2**

BLACK

CODE **CHROMO BIB 2 M** ♂
RACE PAD
Men's bib tight with butt-patch

CODE **CHROMO BIB 2 F** ♀
RACE PAD
Women's bib tight with butt-patch

CODE **CHROMO BIB 2 E**
TWIN PADDED TECHNOLOGY
Bib tight with exterior butt-patch

More info on p. 14

STRAPLESS CYCLING SHORTS

SIXS FREE SHORT can be used both as a unique garment or as a baselayer boxer, under an MTB pants (Baggy Short) or a urban pants. Seamless technology, with no seams on the sides, means perfect adherence and wearability, without irritating contact points. 3D inserts to improve the fit and reduce chafing.

FEATURES	SIZES
Breathability: <div><div></div><div></div><div></div><div></div><div></div></div>	S, M, L, XL
Insulation: <div><div></div><div></div><div></div><div></div><div></div></div>	
Wind protection: <div><div></div><div></div><div></div><div></div><div></div></div>	
H ₂ O protection: <div><div></div><div></div><div></div><div></div><div></div></div>	
ATTRIBUTES	WEATHER
<div></div> <div></div> <div></div> <div></div> <div></div> <div></div>	<div></div> <div></div>



CODE **FREE SHORT**

BLACK

RACE PAD
Men's bib tight with butt-patch

CODE **FREE SHORT**

RACE PAD
Women's bib tight with butt-patch

More info on p. 14

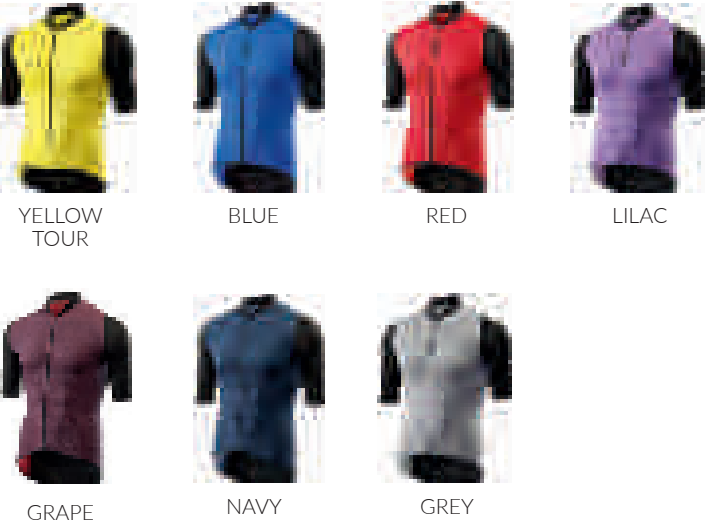
MID-SEASON BIKE JERSEY

The HIVE Jersey is a short-sleeve cycling jersey for mid-range temperatures, created using a revolutionary technology. The 3D honeycomb structure, made from 100% polypropylene, creates an air cushion that insulates and provides thermoregulation for the body, allowing for maximum breathability and sweat wicking. The rear, which is contoured for perfect wearability, retains the classic Carbon Activewear construction. Pair this garment with MANI or MANI STORM sleeves on cooler days and bring along a GHOST/WARD vest or jacket for greater protection when going downhill or in case of bad weather.

FEATURES	SIZES
Breathability: <div><div></div><div></div><div></div><div></div><div></div></div>	S, M, L, XL
Insulation: <div><div></div><div></div><div></div><div></div><div></div></div>	
Wind protection: <div><div></div><div></div><div></div><div></div><div></div></div>	
H ₂ O protection: <div><div></div><div></div><div></div><div></div><div></div></div>	
ATTRIBUTES	WEATHER
<div><div></div><div></div><div></div><div></div><div></div></div>	<div><div></div></div>



CODE **HIVE JERSEY**



WINDSHELL BIKE JERSEY

The WINDSHELL jersey is a long sleeve cycling jersey ideal for the fall and spring, when the temperatures still require protection against the cold air. Made from breathable polypropylene enhanced with 3D-insert technology in the areas most prone to sweating, so as to promote the expulsion of moisture and body heat. On the front is a membrane to shield against the wind and repel water, to protect you against cold gusts of wind. Reflective insert to increase visibility and a practical pocket with three compartments.

FEATURES	SIZES
Breathability: <div><div></div><div></div><div></div><div></div><div></div></div>	S, M, L, XL
Insulation: <div><div></div><div></div><div></div><div></div><div></div></div>	
Wind protection: <div><div></div><div></div><div></div><div></div><div></div></div>	
H ₂ O protection: <div><div></div><div></div><div></div><div></div><div></div></div>	
ATTRIBUTES	WEATHER
<div><div></div><div></div><div></div><div></div></div>	<div><div></div><div></div></div>



CODE **WIND JERSEY AW**



SHORT-SLEEVE WINDSHELL BIKE JERSEY

Cycling jersey with thin windproof membrane on the frontal areas - ideal on spring days when the weather is still uncertain.

Protects from frontal wind without overheating the body, thanks to the lightweight fabric and the rear area in Carbon Activewear.

The inner layer (honeycomb) collects moisture and transfers it to the hydrophilic membrane, which allows you to expel sweat without passing water and wind from the outside.

FEATURES

- Breathability:
- Insulation:
- Wind protection:
- H₂O protection:

SIZES

S, M, L, XL

ATTRIBUTES



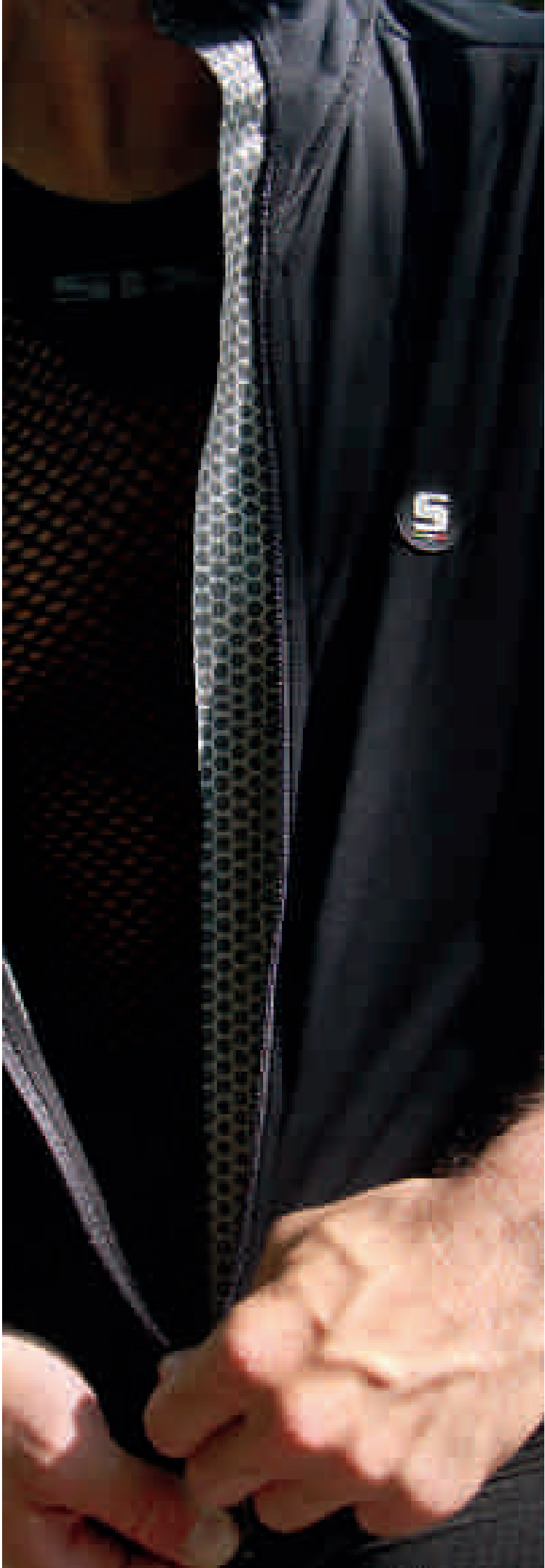
WEATHER



CODE **TREMONTI JERSEY**



GREY
BLACK



SOFTSHELL JACKET

The TWISTER JACKET is our best-performing jacket in conditions of extreme cold. The membrane used is a softshell, bonded and coated to be completely waterproof (10,000 mm water column).

The interior is polypropylene for perfect breathability and thermal insulation. Improved with respect to the previous version, it is now made membrane on the entirety of its construction, allowing for better insulation from the cold on days when temperatures are harsher. The softshell membrane is designed to work effectively in any sort of weather conditions.

FEATURES	SIZES
Breathability: <div><div></div><div></div><div></div><div></div><div></div></div>	XS, S, M, L, XL, XXL
Insulation: <div><div></div><div></div><div></div><div></div><div></div></div>	
Wind protection: <div><div></div><div></div><div></div><div></div><div></div></div>	
H ₂ O protection: <div><div></div><div></div><div></div><div></div><div></div></div>	
ATTRIBUTES	WEATHER
<div><div></div><div></div><div></div></div>	<div><div></div><div></div><div></div></div>



CODE **TWISTER JACKET**



BLACK

WATER REPELLENT JACKET

The STORM JACKET is a cycling garment created for those who strive for maximum performance even during the coldest times of year.

The fabric used is incredibly light, while nonetheless retaining its extraordinary properties of water resistance, efficient insulation and high breathability, for unparalleled comfort.

The minimal weight and volume of the STORM JACKET make it pleasant to wear on sunny days, too, even while it offers protection against unpleasant fall and spring weather.

FEATURES	SIZES
Breathability: <div><div></div><div></div><div></div><div></div><div></div></div>	XS, S, M, L, XL, XXL
Insulation: <div><div></div><div></div><div></div><div></div><div></div></div>	
Wind protection: <div><div></div><div></div><div></div><div></div><div></div></div>	
H ₂ O protection: <div><div></div><div></div><div></div><div></div><div></div></div>	
ATTRIBUTES	WEATHER
<div><div></div><div></div><div></div></div>	<div><div></div><div></div><div></div></div>



CODE **STORM JACKET**



BLACK



WINTER BIB TIGHT

Winter bib tight made of the waterproof PolarTech Activewear membrane: protection from wind and water without sacrificing breathability. It keeps the skin dry and the body insulated without wasting precious energy to heat the body. Also recommended for harsh temperatures. Available with men's or women's seat pad.

FEATURES

Breathability:	— — — — —
Insulation:	— — — — —
Wind protection:	— — — — —
H ₂ O protection:	— — — — —

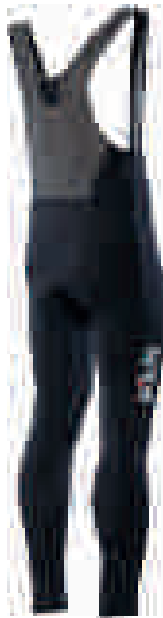
SIZES

XS, S, M, L, XL, XXL

ATTRIBUTES



WEATHER



CODE **TWISTER BIBT**



BLACK

CODE **TWISTER BIBS**



BLACK



CODE **TWISTER BIBT M** ♂
ENDURANCE PAD
Men's bib tight with butt-patch

CODE **TWISTER BIBT F** ♀
ENDURANCE PAD
Women's bib tight with butt-patch

More info on p. 14



CODE **TWISTER BIBS M** ♂
ENDURANCE PAD
Men's bib tight with butt-patch

CODE **TWISTER BIBS F** ♀
ENDURANCE PAD
Women's bib tight with butt-patch

More info on p. 14

WATER REPELLENT BIB TIGHT

This cycling bib tight is the best garment for the chilliest days out on a bike, when the temperatures begin to fall. The fabric used is unbelievably light, while nonetheless retaining its incredible properties of water resistance, efficient insulation and high breathability, for unparalleled comfort. The low weight and minimal volume of the STORM BIBTIGHT make it pleasant to wear when riding in the sun or uphill as well, even while it offers protection against unpleasant fall and spring weather.

“Endurance Pad” seat pad: designed for long distances (over 8 hours of riding). The triple-density construction guarantees lasting comfort throughout the session.

Available with men's or women's seat pad.

FEATURES

Breathability:	— — — — —
Insulation:	— — — — —
Wind protection:	— — — — —
H ₂ O protection:	— — — — —

ATTRIBUTES



SIZES

XS, S, M, L, XL, XXL

WEATHER



CODE **STORM BIBT**



BLACK

CODE **STORM BIBS**



BLACK



More info on
p. 14



CODE **STORM BIBT M** ♂
ENDURANCE PAD
Men's bib tight with butt-patch



CODE **STORM BIBT F** ♀
ENDURANCE PAD
Women's bib tight with butt-patch



More info on
p. 14



CODE **STORM BIBS M** ♂
ENDURANCE PAD
Men's bib tight with butt-patch



CODE **STORM BIBS F** ♀
ENDURANCE PAD
Women's bib tight with butt-patch

WATERPROOF VEST AND JACKET

Jacket in membrane with windproofing and waterproofing treatments, compact and lightweight enough to fit in your pocket.

The membrane this garment is made from will protect you against harsh weather. You can keep it to use as an emergency garment, but you can also wear it for wet-weather training sessions. Thanks to the polypropylene inserts and the interior layer in BREATHABLE PU, you will still enjoy excellent breathability.

Opening on the rear with Velcro closure, for easy access to pockets during sports activities.

FEATURES

Breathability:	<div><div></div><div></div><div></div><div></div><div></div></div>
Insulation:	<div><div></div><div></div><div></div><div></div><div></div></div>
Wind protection:	<div><div></div><div></div><div></div><div></div><div></div></div>
H ₂ O protection:	<div><div></div><div></div><div></div><div></div><div></div></div>

SIZES

S, M, L, XL, XXL

ATTRIBUTES



WEATHER



CODE **WARD GILET**



GREY/BLACK

CODE **WARD JACKET**



GREY/BLACK

WINDPROOF COMPACT VEST AND JACKET

Lightweight and handy to stow in a pocket, the windproof SIXS GHOST vest and jacket are the essential garments to always bring with you during workouts or competitions or when going on classic hikes. Quick to put on, with a practical zipper that does not create gaps to let the rain and wind get through.

Collar lined with Carbon Underwear fabric, to increase comfort and eliminate irritations

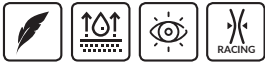
FEATURES

Breathability:	— — — — —
Insulation:	— — — — —
Wind protection:	— — — — —
H ₂ O protection:	— — — — —

SIZES

S, M, L, XL, XXL

ATTRIBUTES



WEATHER



CODE **GHOST GILET**



BLACK
CARBON



YELLOW
FLUO



GREEN
FLUO



ORANGE
FLUO



RED



LIGHT
BLUE

CODE **GHOST JACKET**



BLACK
CARBON



YELLOW
FLUO



GREEN
FLUO



ORANGE
FLUO



RED



LIGHT
BLUE



SHORT-SLEEVE POLO SHIRT

Comfortable and breathable short-sleeve polo shirt with a refined and traditional design. The benefits of Carbon Activewear are found in this garment, too, to guarantee perfect breathability and thermal insulation. Product recommended for sportspeople who demand style, including in indoor situations, without giving up the benefits of a technical garment.

FEATURES

Breathability:	— — — — —
Insulation:	— — — — —
Wind protection:	— — — — —
H ₂ O protection:	— — — — —

SIZES

S, M, L, XL

ATTRIBUTES



WEATHER



CODE **POLO**

CODE **POLS**



BLACK WHITE GREY PETROLEUM TEAL



BLACK WHITE GREY PETROLEUM TEAL

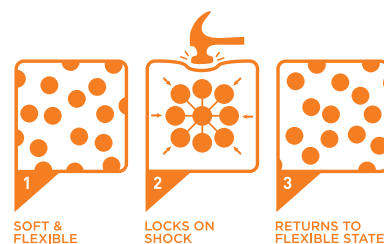
COMFORT AND PROTECTION HAVE A NEW NAME

The introduction of SAS-TEC protectors to the range of SIXS products brilliantly satisfies the need for **safety and freedom of movement in all sports.**

Practical housings hold the protective elements, which are perfectly positioned at the crucial points of the body. The **protectors** are in turn soft and comfortable,

but instantly **become stiff and protective when they are needed.**

These features, along with the standard thermoregulation and breathability of SIXS products, make the garments in the Pro Tech line an excellent solution for anyone looking for a single product offering both comfort and protection.



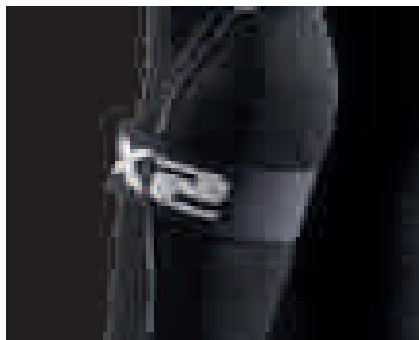
TECHNOLOGICAL INNOVATIONS

Materials unique on the protection scene, which combine chemistry and advanced engineering to obtain a **top performing impact absorption system.**

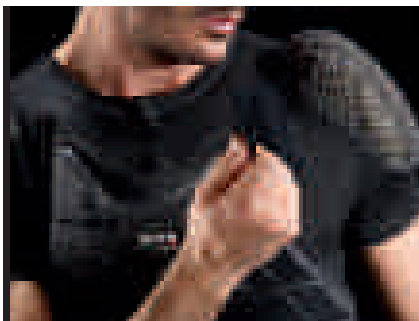
In normal conditions, the molecules flow freely to allow the material to remain soft and pliant, but at the moment of impact they lock together to absorb the shock and abate the force transmitted. Afterwards the molecules immediately return to their pliant state.



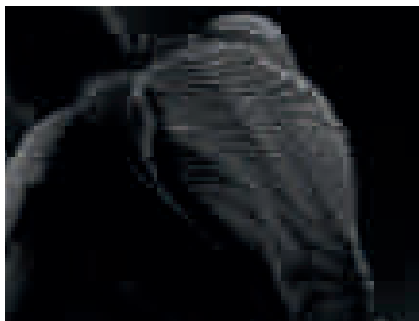
The abdominal band with Velcro closure keeps the back protective armor firmly in place on the athlete's back.



The elastic band with Velcro closure on the elbow makes sure that the protector always stays stable and properly positioned, even if subjected to intense stresses.



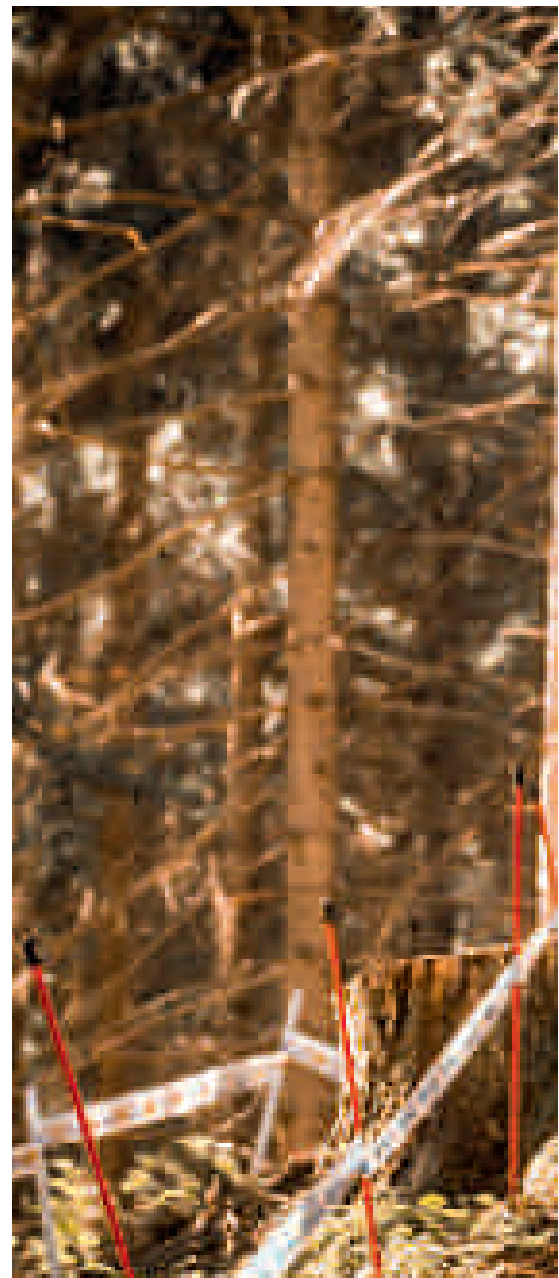
Chest armor is easy to adjust on the jersey with the aid of the Velcro fastening, so its position can be adjusted according to other protectors.



The pockets are painstakingly sewn around the protectors to secure them in the right position.

THE CHOICE IS UP TO YOU

Pro Tech line products can be purchased "**bare**" (meaning without protectors) or in the "**KIT**" version (complete with protectors). The KIT lets the athlete purchase just one bundle of protective elements and use them inside other products in the Pro Tech range.



PROTECTION WHERE IT IS NEEDED, WHEN IT IS NEEDED

PRO-TECH



SAS-TEC
Body protection systems

Alia Marcellini
Credits: Claudio Foco

MESH SLEEVELESS JERSEY WITH SPINAL PROTECTION

Mesh sleeveless jersey, ready for insertion of spinal protection. The customer can choose between the CE approved back protective armor level 1 (PRO BACK LIGHT by SAS-TEC) or level 2 (PRO BACK CE2 by SAS-TEC). Perfect for warm days when you want to have just the bare minimum, but you don't want to go without protection. Thanks to GRID-TECH technology, the mesh lies between the skin and the clothing on top, to prevent annoying chafing and create cushions of fresh air that reduce the sensation of the skin "suffocating" under the garment. The polyamide fiber with its extremely low specific weight is able to absorb the skin's moisture to leave it fresh and dry. The back of the sleeveless jersey is in "mesh", so that the rear pocket, where the back protective armor will be inserted, can be fastened.

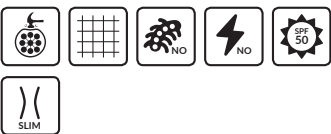
FEATURES

- Breathability:
- Insulation:
- Wind protection:
- H₂O protection:

SIZES

One size fits all

ATTRIBUTES



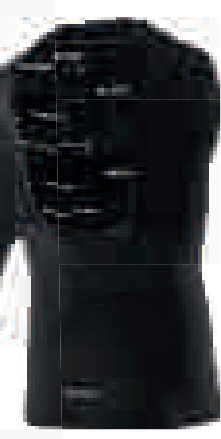
WEATHER



REINFORCED CARBON UNDERWEAR PROTECTIVE JERSEY

Jerseys with full-length zipper, made of Reinforced Carbon Underwear material: the Carbon Underwear fabric has been reinforced to guarantee the same breathability and insulating features as our Underwear, but with increased density to bear the weight of the protectors and keep them firmly in place. Protections can be integrated as needed (products have the predisposition).

The back protective armor is fastened to the sleeveless jersey with a back pocket stitched at the top, but raised off of the center zone of the back to offer enhanced ventilation, and an abdominal band with Velcro closure that holds it in position. The ventilated chest protective armor (CE approved) is easy to adjust and remove using the Velcro closure. Product compatible with any type of Neck Brace.



CODE **KIT PRO SMR**

Code inclusive of protectors

CODE **PRO SMR**

Code without protectors

CODE **KIT PRO SM9**

Code inclusive of protectors

CODE **PRO SM9**

Code without protectors



BLACK



BLACK

FEATURES

Breathability:

Insulation:

Wind protection:

H₂O protection:

SIZES

S, M, L, XL

ATTRIBUTES



NO



NO



NO



NO



SP 50



SUM

WEATHER





PRO-TECH - 65

CODE **KIT PRO TS8**

Code inclusive of protectors

CODE **PRO TS8**

Code without protectors

CODE **KIT PRO TS10**

Code inclusive of protectors

CODE **PRO TS10**

Code without protectors

BLACK

BLACK

PROTECTIVE LEGGINGS

Protective leggings made of Reinforced Carbon Underwear® fabric.
The Carbon Underwear fabric has been reinforced to guarantee the same breathability and insulating features as our Underwear, but with increased density to bear the weight of the protectors and keep them firmly in place.
Removable protectors to provide easy personalization based on use.

FEATURES

Breathability:

Insulation:


Wind protection:


H₂O protection:


SIZES


S, M, L, XL, XXL


ATTRIBUTES






















WEATHER





CODE **KIT PRO PNK**

Code inclusive of protectors

CODE **PRO PNK**

Code without protectors

BLACK
CARBON

PROTECTIVE ELBOW GUARDS

Elbow guard made of Polyfiber Cover to achieve optimum breathability and thermal insulation, with inside pocket for inserting the protective element.
The pocket prevents the protector – which, after being heated by the body's heat, precisely follows the anatomy of the joint – from moving.
After a few minutes you forget you are wearing it, but, in case of impact, the protector stiffens and protects against impact.

FEATURES

Breathability:

Insulation:


Wind protection:

H₂O protection:


SIZES


S/M, L/XL


ATTRIBUTES



WEATHER







CODE **KIT PRO MANI**

Code inclusive of protectors

CODE **PRO MANI**

Code without protectors

BLACK

PROTECTIVE KNEE GUARDS

Knee guard made of Polyfiber Cover to achieve optimum breathability and thermal insulation, with inside pocket for inserting the protective element.

The pocket prevents the protector – which, after being heated by the body's heat, precisely follows the anatomy of the joint – from moving.

After a few minutes you forget you are wearing it, but, in case of impact, the protector stiffens and protects against impact.

FEATURES

Breathability: — — — — —
 Insulation: — — — — —
 Wind protection: — — — — — —
 H₂O protection: — — — — —

SIZES

One size fits all

ATTRIBUTES



WEATHER



CODE **KIT PRO GACO**

Code inclusive of protectors



BLACK

BACK PROTECTIVE ARMOR

Designed to perfectly adapt under any jersey or outerwear, this back protective armor is light and comfortable, and comes with removable armor (this feature makes it suitable for motorcycle use when combining a level 2 CE-approved PRO BACK CE2, or for cycling use when paired with the new light level 1 CE-approved PRO BACK LIGHT protector). Adjustable stretch suspenders and abdominal band with dual Velcro adjustment to get a perfect fit.

FEATURES

Breathability: — — — — —
 Insulation: — — — — —
 Wind protection: — — — — —
 H₂O protection: — — — — —

SIZES

One size fits all

ATTRIBUTES



WEATHER



CODE **KIT PRO BACKBONE S2**

CODE **KIT PRO BACKBONE**



BLACK



BLACK

CHEST PROTECTIVE ARMOR

CE EN 14021 approved chest protective armor compliant with F.M.I. (Italian motorcycling federation) regulations for MX, Enduro, Trial, Supermoto and Snowmobiles. Fitted with slits to ensure optimum ventilation on the torso, it is easy to adjust on the jersey using the Velcro fastening, so its position can be adjusted according to other protectors (like a neck brace).

SIZES

One size fits all



CODE **PRO CHEST**

LIGHT BACK PROTECTIVE ARMOR

CE EN 1621-2, level 1 approved SAS-TEC back protective armor made of soft and pliant polyurethane foam. Perforated to offer lighter weight and improved breathability. The material warms up with body heat and models itself to best follow the anatomy of the back. At the moment of impact, the kinetic force is transmitted to the atoms, which firmly bond with each other to stiffen the structure, so that it absorbs the impact and protects the body. When the material is cold, handle with care. Wash by hand in cold water.

SIZES

One size fits all



CODE **PRO BACK LIGHT**

BACK PROTECTIVE ARMOR CE

CE EN 1621-2, level 2 (the safest) approved SAS-TEC back protective armor made of soft and pliant polyurethane foam. The material warms up with body heat and models itself to best follow the anatomy of the back. At the moment of impact, the kinetic force is transmitted to the atoms, which firmly bond with each other to stiffen the structure, so that it absorbs the impact and protects the body. When the material is cold, handle with care. Wash by hand in cold water.

SIZES

S (KIDS), M (SMALL/MEDIUM)
L (LARGE), XL (X-LARGE)



CODE **PRO BACK CE2**



PROTECTORS

Soft and pliant polyurethane foam protector.

The material warms up with body heat and models itself to best follow the anatomy of the body.

At the moment of impact, the kinetic force is transmitted to the atoms, which firmly bond with each other to stiffen the structure, so that it absorbs the impact and protects the body.

When the material is cold, handle with care. Wash by hand in cold water.

PRO AS - hip protectors LIV.1

PRO BS - shoulder protectors LIV.2

PRO CS - knee/elbow protectors LIV.2

SIZES

One size fits all



CODE **PRO AS**

CODE **PRO BS**

CODE **PRO CS**



Credits: Photo by
Thomas Schweighofer on Unsplash



KIDS

FOR TOMORROW'S CHAMPIONS!

Here is enhanced comfort and safety for children up to the age of 12, too. Whether they are just starting out on a stupendous sports career or are taking up weekend challenges with their friends, the patented Carbon Underwear® fabric will help them maintain the right body insulation and temperature. This means fewer colds, sore throats and flu. In short, it is a big help when it comes to their health!

FROM AGE 4 AND UP

We are the first to offer children the same solutions that win over athletes around the world. Our products come in the sizes of 4 to 12 years of age.

Since it is their growth period, the fantastic stretch of the fabric ensures a longer lifetime than would be expected. Indeed, it will not be necessary to change the product every year, much to the joy of the parents!

**WE FULFIL
THE DREAMS OF
LITTLE ATHLETES**

4 SEASONS KIDS CARBON UNDERWEAR JERSEYS

Products for children from 4 to 12 years of age: multi-sport garment, ideal on all occasions.

Skin that is always dry and fresh during competition and training in any sport.

The lightest and most breathable polypropylene fiber on the market combined with a real carbon yarn that provides heat transmission and antistatic properties that protect the body from the electric charge caused by rubbing multiple synthetic fabrics against each other (condition typical of sports clothing).

Tight fit for wearing underneath outerwear.

FEATURES

Breathability:	— — — — —
Insulation:	— — — — —
Wind protection:	— — — — —
H ₂ O protection:	— — — — —

SIZES

4Y, 6Y, 8Y, 10Y, 12Y



CODE **KSMX**

CODE **KTS1**



BLACK
CARBON



WHITE
CARBON



BLACK
CARBON



WHITE
CARBON

ATTRIBUTES



WEATHER



CODE **KTS2**



CODE **KTS3**



KIDS CARBON UNDERWEAR
PROTECTIVE JERSEYS

SIXS Carbon Underwear protective jersey for children from 10 to 12 years of age.

Protections can be integrated as needed (products have the predisposition).

CE approved builtin insert for back protective armor: the armor perfectly adapts to the back owing to the body heat. At the time of impact, the kinetic energy inside the protective element causes the structure to stiffen and prevents the shock from being transferred to the body.

Removable armor for easy washing and maximum choice of configurations.

FEATURES		SIZES
Breathability:	— — — — —	10Y, 12Y
Insulation:	— — — — —	
Wind protection:	— — — — —	
H ₂ O protection:	— — — — —	

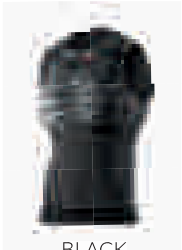


CODE **K KIT PRO SMX**
Code inclusive of protectors

CODE **K PRO SMX**
Code without protectors

CODE **K KIT PRO TS1**
Code inclusive of protectors

CODE **K PRO TS1**
Code without protectors





BLACK
CARBON




BLACK
CARBON

ATTRIBUTES







NO




NO



NO





SPF 50




SLIM

WEATHER









CODE **K KIT PRO TS2**

Code inclusive of protectors

CODE **K PRO TS2**

Code without protectors



BLACK
CARBON

4 SEASONS KIDS CARBON
UNDERWEAR LEGGINGS

Leggings made of Carbon Underwear fabric for children from 4 to 12 years of age:multi-sport garment, ideal on all occasions.
Skin that is always dry and fresh during competition and training in any sport.
The lightest and most breathable polypropylene fiber on the market combined with a real carbon yarn that provides heat transmission and antistatic properties that protect the body from the electric charge caused by rubbing multiple synthetic fabrics against each other (condition typical of sports clothing).
Tight fit for wearing underneath outerwear.

FEATURES

Breathability:	— — — — —
Insulation:	— — — — —
Wind protection:	— — — — —
H ₂ O protection:	— — — — —

SIZES

4Y, 6Y, 8Y, 10Y, 12Y

ATTRIBUTES



WEATHER



CODE **K CC1**

24,90 €

CODE **K PNX**

31,90 €



BLACK
CARBON



WHITE
CARBON



BLACK
CARBON



WHITE
CARBON



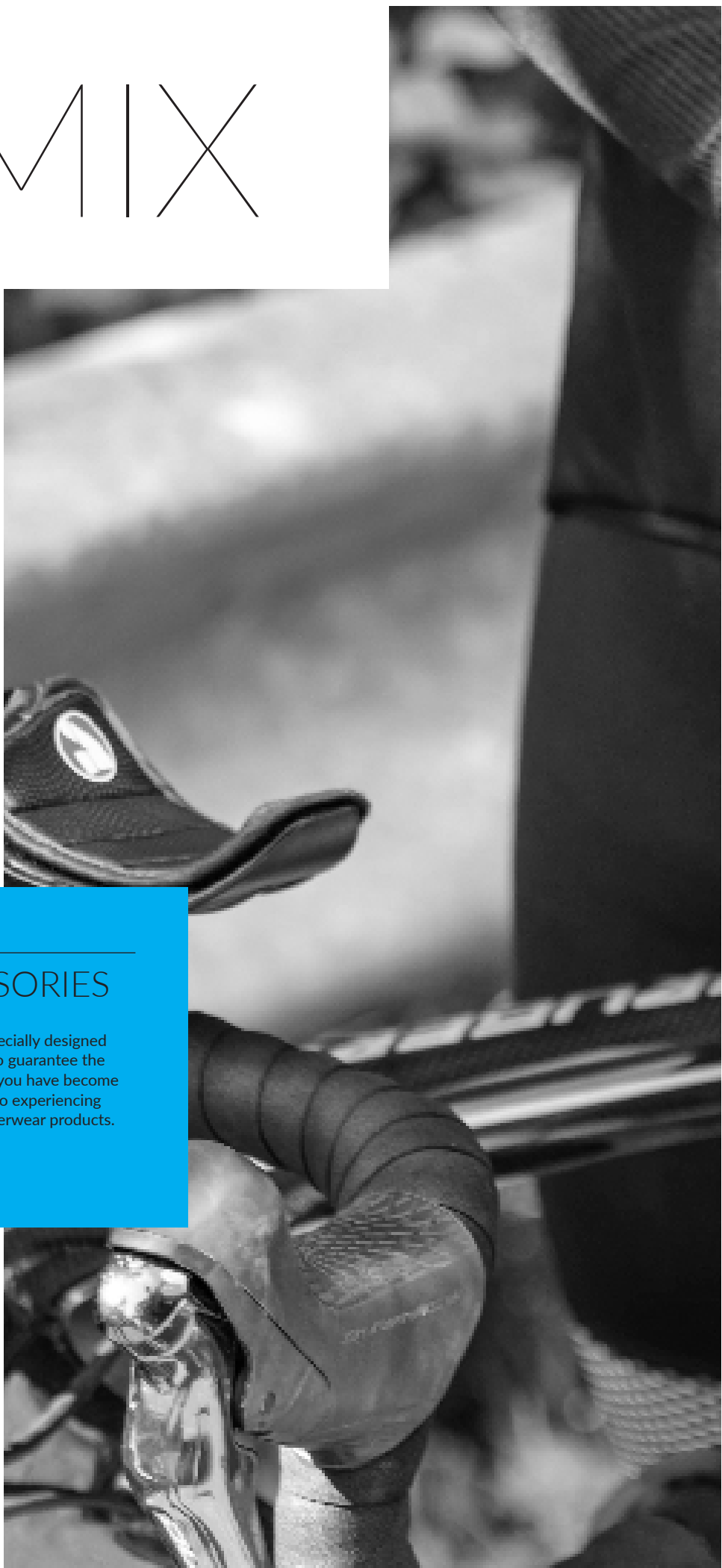
X-MIX

MULTI-SPORT ACCESSORIES

X-Mix is a range that offers the **multi-sport accessories** needed to complete an outfit with style without forgoing the technical features of SIXS products. Our technology is once again offered in different formulations, which

have been specially designed and revised to guarantee the same quality you have become accustomed to experiencing with our Underwear products.

**COMPLETE
YOUR OUTFIT
WITH OUR
ACCESSORIES**





SUPERLIGHT CARBON UNDERWEAR SKULL CAP

Skull cap made of SuperLight Carbon Underwear fabric to protect the head from changes in temperature.

On hot days, once again thanks to patented SIXS technology, it provides unrivaled comfort by preventing perspiration from building up.

FEATURES

Breathability:

Insulation:

Wind protection:

H₂O protection:

SIZES

One size fits all

ATTRIBUTES

WEATHER

CARBON UNDERWEAR SKULL CAP

Skull cap made of Carbon Underwear fabric: protect the head from changes in temperature.

On cold days, the patented SIXS Carbon Underwear fabric eliminates body moisture and perspiration from the skin, so that the feeling of cold is extremely reduced.

Likewise, on hot days – once again thanks to patented SIXS technology – it provides unrivaled comfort by preventing perspiration from building up.

FEATURES

Breathability:

Insulation:

Wind protection:

H₂O protection:

SIZES

One size fits all

ATTRIBUTES

WEATHER



CODE **SCX LIGHT**



CODE **SCX**



CARBON MERINO WOOL SKULL CAP

This soft and stretchy Carbon Merino Wool skull cap is the ideal solution to keep your head warm and dry during the winter.

Although the weight of the fabric is decidedly low (only 164g/m²), merino wool acts as a natural barrier against the cold.

Placing it outside the tissue, we have eliminated the classic problem of itching; the layer of polypropylene in contact with the skin avoids the accumulation of sweat, giving unparalleled comfort.

FEATURES

Breathability: ■ ■ ■ ■ ■ ■
 Insulation: ■ ■ ■ ■ ■ ■
 Wind protection: ■ ■ ■ ■ ■ ■
 H₂O protection: ■ ■ ■ ■ ■ ■

SIZES

One size fits all

ATTRIBUTES



WEATHER



CODE **SCX MERINOS**



WOOL
GREY

CARBON UNDERWEAR EARBAND

Earband made of Carbon Underwear® fabric that protects the ears, temples and forehead from the outside air while always letting the skin breathe. Handy and convenient to always have within reach both during the winter and summer.

FEATURES

Breathability: ■ ■ ■ ■ ■ ■
 Insulation: ■ ■ ■ ■ ■ ■
 Wind protection: ■ ■ ■ ■ ■ ■
 H₂O protection: ■ ■ ■ ■ ■ ■

SIZES

One size fits all

ATTRIBUTES



WEATHER



CODE **FSX**



BLACK



ORANGE
FLUO



GREEN
FLUO



RED

SUMMER CYCLING CAP

Summer cycling cap, with a classic fit.
Polyester mesh offers maximum air flow – light visor with graphic print.

FEATURES

Breathability:

Insulation:

Wind protection:

H₂O protection:

SIZES

One size fits all

ATTRIBUTES

WEATHER

WINTER BALACLAVA

Balaclava to be worn underneath the helmet, with a winter visor made from waterproof membrane. The fabric used is unbelievably light, while nonetheless retaining its incredible properties of water resistance, efficient insulation and high breathability, for unparalleled comfort.

FEATURES

Breathability:

Insulation:

Wind protection:

H₂O protection:

SIZES

One size fits all

ATTRIBUTES

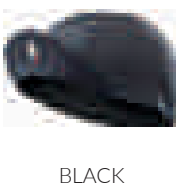
WEATHER



CODE CYCLING CAP



CODE STORM CAP





MULTI-PURPOSE CARBON UNDERWEAR NECKWARMER

Multi-purpose neckwarmer made of Carbon Underwear® protects the athlete's neck, nose and lips from the cold while always letting the skin breathe. It can also be used as a hairband or helmet liner. Handy and convenient to always have within reach, both in summer and winter.

FEATURES

Breathability:	■ ■ ■ ■ ■
Insulation:	■ ■ ■ ■ ■
Wind protection:	■ ■ ■ ■ ■
H ₂ O protection:	■ ■ ■ ■ ■

SIZES

One size fits all

ATTRIBUTES



WEATHER



CODE **TBX**



BLACK
CARBON

DARK
GREY

ORANGE
FLUO

LIME



YELLOW
TOUR



RED



LIGHT
BLUE

MULTI-PURPOSE CARBON MERINO WOOL NECK WARMER

Versatile multi-purpose neck warmer in Carbon Merino Wool, ideal for protecting your neck or head during the winter.

The weight of the fabric, 164g/m², makes this product particularly suitable for use at low temperatures. The polypropylene layer that is in contact with the skin prevents accumulation of perspiration, providing unmatched comfort.

The merino wool (one of the natural fibers with the greatest insulating properties) is properly placed in the outer layer to act as a barrier.

FEATURES

Breathability:	■ ■ ■ ■ ■
Insulation:	■ ■ ■ ■ ■
Wind protection:	■ ■ ■ ■ ■
H ₂ O protection:	■ ■ ■ ■ ■

SIZES

One size fits all

ATTRIBUTES



WEATHER



CODE **TBX MERINOS**



WOOL
GREY

CARBON UNDERWEAR GLOVE LINERS

Carbon Underwear glove liner, guarantees outstanding thermal protection. To wear under gloves with protectors, or can be used as running gloves. On hot days, the heat is dissipated and perspiration is prevented from building up so comfort is unrivaled. Meanwhile, in cold weather, temperature can be under control.

FEATURES

Breathability: 
Insulation: 
Wind protection: 
H₂O protection: 

SIZES

S, M, L, XL

ATTRIBUTES



WEATHER



CODE **GLX**



BLACK
CARBON

CARBON MERINO WOOL GLOVE LINERS

Carbon Merino Wool glove liner, guarantees outstanding thermal protection. The polypropylene layer that is in contact with the skin prevents accumulation of perspiration, providing unmatched comfort. The merino wool (one of the natural fibers with the greatest insulating properties) is properly placed in the outer layer to act as a barrier.

FEATURES

Breathability: 
Insulation: 
Wind protection: 
H₂O protection: 

SIZES

S/M, L/XL

ATTRIBUTES



WEATHER



CODE **GLX MERINOS**



WOOL
GREY

SHORT-FINGER
SUMMER GLOVES

Short-finger summer cycling gloves, “MADE IN ITALY” with the care of fine craftsmanship.
Ideal glove for the hottest months, when temperatures rise as high as 30° C.
The special padding inside the palm ensures comfort, while the breathable fabrics on the back of the hand keep the skin dry and cool. Short wrist cuff, easy to take on and off thanks to the pull-tabs between the fingers.

FEATURES

Breathability:	—	—	—	—	—
Insulation:	—	—	—	—	—
Wind protection:	—	—	—	—	—
H ₂ O protection:	—	—	—	—	—

SIZES

S, M, L, XL, XXL

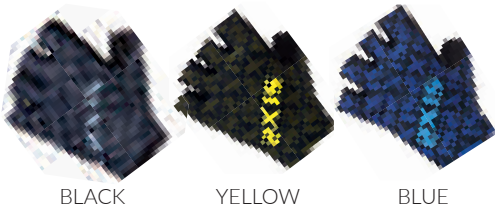
ATTRIBUTES



WEATHER



CODE **SUMMER GLO**



BLACK

YELLOW

BLUE

FULL-FINGER
SUMMER GLOVES

The full-finger version, with the same technical characteristics as the short-finger glove SUMMER GLO. Offering greater protection and designed for off-road use.
The special padding inside the palm ensures comfort, while the breathable fabrics on the back of the hand keep the skin dry and cool.

FEATURES

Breathability:	—	—	—	—	—
Insulation:	—	—	—	—	—
Wind protection:	—	—	—	—	—
H ₂ O protection:	—	—	—	—	—

SIZES

S, M, L, XL, XXL

ATTRIBUTES



WEATHER



CODE **MTB GLO**



BLACK
YELLOW

SPRING AND
FALL GLOVES

Full-finger cycling gloves can be used both on racing bikes or on mountain bikes in the spring and fall seasons.
The padded palm follows the anatomical contours of the hand, while the back of the glove is made from warm and breathable Super Roubaix fabric. “MADE IN ITALY” with the care of fine craftsmanship.

FEATURES

Breathability:	—	—	—	—	—
Insulation:	—	—	—	—	—
Wind protection:	—	—	—	—	—
H ₂ O protection:	—	—	—	—	—

SIZES

S, M, L, XL, XXL

ATTRIBUTES



WEATHER



CODE **SUPERROUBAIX GLO**



BLACK

WINTER GLOVES

Winter gloves made with Windtex: an ultralight waterproof and windproof membrane that combines softness, stretch and abrasion resistance.

The product is naturally breathable and insulating. Plus, it offers a high degree of comfort at low temperatures. Appliqué on palm and thumb to improve handlebar grip.

FEATURES

Breathability:	—	—	—	—	—
Insulation:	—	—	—	—	—
Wind protection:	—	—	—	—	—
H ₂ O protection:	—	—	—	—	—

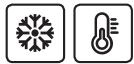
SIZES

XS, S, M, L, XL, XXL

ATTRIBUTES



WEATHER



CODE **WINTER GLO**



BLACK CARBON
YELLOW FLUO

WATER REPELLENT WINTER GLOVE

Cycling glove for the coldest temperatures and for rainy days. Ideal for the coldest months, even when temperatures fall below zero (as low as -10° C).

The neoprene membrane is entirely coated and waterproof, insulating the hands against the cold and the wind, and regulating body temperature. With a sweat-wicking pad on the thumb and an anatomical no-slip palm.

FEATURES

Breathability:	—	—	—	—	—
Insulation:	—	—	—	—	—
Wind protection:	—	—	—	—	—
H ₂ O protection:	—	—	—	—	—

SIZES

S, M, L, XL, XXL

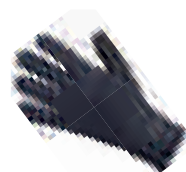
ATTRIBUTES



WEATHER



CODE **RAIN GLO**



BLACK

TOE CAP

Waterproof and windproof toe cap in neoprene fabric, perfect for chilly days, easy to put on, light and compact, so it's easy to carry in your pocket when you're out.

FEATURES

Breathability:	—	—	—	—	—
Insulation:	—	—	—	—	—
Wind protection:	—	—	—	—	—
H ₂ O protection:	—	—	—	—	—

SIZES

S/M (39/42)
L/XL (43/46)

ATTRIBUTES



WEATHER



CODE **NEOPRENE TOE**



BLACK

SHOE COVERS

Shoe cover made of Smart Covershoes® fabric. Its cordura and polyethylene blend guarantees thermal insulation and abrasion-resistance. Ideal in the spring and fall to protect against cold air and sudden changes in temperature, to prevent getting the shoes dirty, and why not? They provide an extra touch of style as well!

FEATURES

Breathability:	—	—	—	—	—
Insulation:	—	—	—	—	—
Wind protection:	—	—	—	—	—
H ₂ O protection:	—	—	—	—	—

SIZES

S (35/38)
M (39/42)
L (43/46)

ATTRIBUTES



WEATHER



CODE **SMART BOOTIE**



BLACK

WATERPROOF WINTER
SHOE COVERS

Shoe covers made with a light water repellent membrane, taped seams for maximum resistance to rain. Usable during all seasons of the year.

FEATURES

Breathability:	—	—	—	—	—
Insulation:	—	—	—	—	—
Wind protection:	—	—	—	—	—
H ₂ O protection:	—	—	—	—	—

SIZES

S/M (39/42)
L/XL (43/46)

ATTRIBUTES



WEATHER



CODE **RAIN COVER**



BLACK

WINTER SHOE COVERS

Shoe covers made with Windtex: an ultralight waterproof and windproof membrane that is a combination of softness, stretch and abrasion resistance.

The product is naturally breathable and insulating. Plus, it offers a high degree of comfort at low temperatures. Zipper fastening on the back so it is easier to put on; reinforcement tab on the heel providing greater resistance.

FEATURES

Breathability:	—	—	—	—	—
Insulation:	—	—	—	—	—
Wind protection:	—	—	—	—	—
H ₂ O protection:	—	—	—	—	—

SIZES

S (38/39)
M (40/42)
L (43/44)
XL (45/46)
XXL (47/48)

ATTRIBUTES



WEATHER



CODE **WINTER BOOTIE**



BLACK CARBON
YELLOW FLUO

WATERPROOF WINTER SHOE COVERS

Waterproof shoe covers for the coldest temperatures and for rainy days.

Ideal for the coldest months, even when temperatures fall below zero (as low as -10° C).

The neoprene membrane is entirely coated and waterproof, insulating the feet against the cold and rain and maintaining natural temperature regulation. Coated water-repellent zipper, reflex insert, insole with Kevlar inserts.

FEATURES

Breathability:	—	—	—	—	—
Insulation:	—	—	—	—	—
Wind protection:	—	—	—	—	—
H ₂ O protection:	—	—	—	—	—

SIZES

S/M (39/42)
L/XL (43/46)

ATTRIBUTES



WEATHER



CODE **RAIN BOOTIE**



BLACK

SLEEVES, LEGGINGS AND SHORT 3/4 LEGGINGS

Products made of Polyfiber Cover: a fabric that provides thermal insulation without jeopardizing breathability and the elimination of moisture from the skin, so the skin is always left dry, thus preventing a feeling of cold and damp.

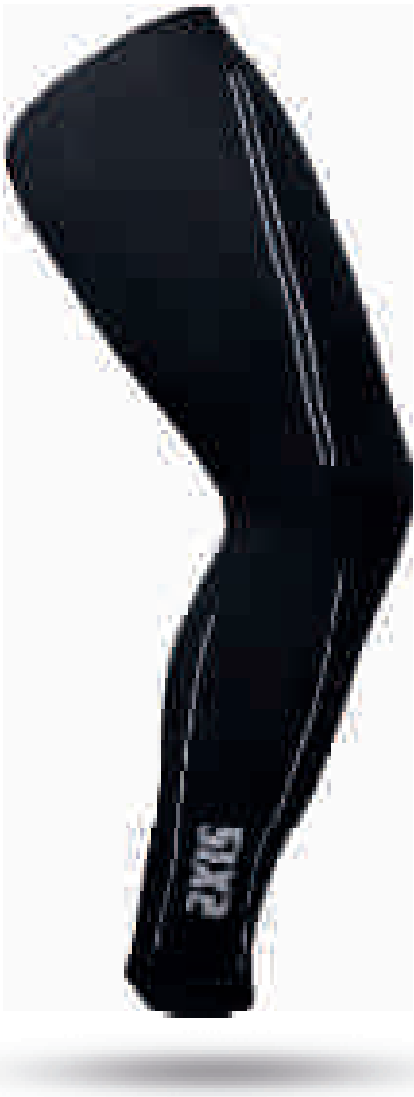
Easy to fold up and store in a pocket. Owing to their anatomic construction, they stay perfectly in place without creasing the joints.

FEATURES

Breathability:	—	—	—	—	—
Insulation:	—	—	—	—	—
Wind protection:	—	—	—	—	—
H ₂ O protection:	—	—	—	—	—

SIZES

S/M, L/XL



CODE **MANI**

CODE **GAMI**



BLACK



BLACK

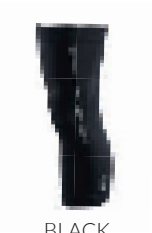
ATTRIBUTES



WEATHER



CODE **GACO**



BLACK

WINTER SLEEVES AND LEGGINGS

Indispensable accessories which are easy to fit in a shirt pocket, they adapt your outfit to suit variable weather conditions.

The fabric used is unbelievably light, while nonetheless retaining its incredible properties of water resistance, efficient insulation and high breathability, for unparalleled comfort.

FEATURES

Breathability:	<div><div></div><div></div><div></div><div></div><div></div></div>
Insulation:	<div><div></div><div></div><div></div><div></div><div></div></div>
Wind protection:	<div><div></div><div></div><div></div><div></div><div></div></div>
H ₂ O protection:	<div><div></div><div></div><div></div><div></div><div></div></div>

SIZES

S/M, L/XL

ATTRIBUTES



WEATHER



CODE **STORM MANI**



BLACK

CODE **STORM GAMI**



BLACK



COMPRESSION





BETTER BLOOD CIRCULATION MEANS BETTER PERFORMANCE

PRINCIPLE OF OPERATION

With their special **variable density** weave, SIXS Compression products compress the muscle fibers in just the right points to **assist blood circulation** and therefore **tissue oxygenation**. It is like having muscles that are constantly massaged throughout their performance.

Like for all SIXS items, also in this case the yarns used are the result of painstaking technological research, are of top quality and foster breathability by helping eliminate sweat from the skin, thus preventing annoying irritations.

WHEN TO USE THEM

The term "performance" does not refer just to racing efficiency. The compression garments offer several **benefits even before start**. They improve blood circulation, **which warms up the muscles faster**. Graduated compression on the limbs also encourages and increases the venous return to the heart and lymph nodes.

There are **a number of benefits** also during the race. First of all, **they considerably reduce muscle damage** (micro-lesions of the fibers) by containing the muscle during activity. This also leads to less swelling after activity, and reduces the possibility of accident and tiredness.

They are essential for **recovery** right after a performance, race or workout. In fact, it is natural that when circulation is stimulated inside the fibers, **muscle fiber recovery and repair time is shortened**.

Then inevitably the compression **increases performance**. By reducing the vibrations of the muscle (main source of fatigue), compression garments lead to greater resistance and strength, and a lower average heart rate.

EVERY DAY

The benefits of the SIXS compression products can also be appreciated in **everyday activities**, such as during long periods of inactivity. When we are forced to stand still or remain seated for a long time, they protect against DVT (Deep Vein Thrombosis) by increasing blood circulation through venous return and reducing swelling in the ankles and legs.

COMPRESSION CALF BAND AND RECOVERY SOCKS

Class 2" compression products.

With its special variable density weave, it compresses the muscle fibers in just the right points to assist blood circulation and therefore oxygenation of the tissues. This prevents lactic acid from accumulating in the calf muscles, which delays fatigue and drastically reduces recovery time.

It can be used before starting the activity to quicken the warmup, during the activity to enhance performance, or right afterward to reduce recovery time. The polyamide yarn used, thanks to its parallel construction, guarantees breathability and sweat wicking.

FEATURES

Breathability:

Insulation:

Wind protection:

H₂O protection:

SIZES

S/1 (32/38cm)

M/2 (36/43cm)

L/3 (41/47cm)

ATTRIBUTES

WEATHER



CODE CALF



BLACK
WHITE



BLUE
GREEN



YELLOW
GREEN



GREEN
RED



ORANGE
BLACK

CODE RECOVERY SOCKS



BLACK
WHITE

COMPRESSIVE SHORT SOCKS

Class 2" compression socks, suitable for use during sports activities.
Reinforced toe and heel for active use during sports, cycling, running or other.
With its special variable density weave, it compresses the muscle fibers in just the right points to assist blood circulation and therefore oxygenation of the tissues. This prevents lactic acid from accumulating in the calf muscles, which delays fatigue and drastically reduces recovery time.

FEATURES	SIZES
Breathability: <div><div></div><div></div><div></div><div></div><div></div></div>	S (36/39)
Insulation: <div><div></div><div></div><div></div><div></div><div></div></div>	M (40/43)
Wind protection: <div><div></div><div></div><div></div><div></div><div></div></div>	L (44/47)
H ₂ O protection: <div><div></div><div></div><div></div><div></div><div></div></div>	
ATTRIBUTES	WEATHER
<div><div></div><div></div></div>	<div><div></div><div></div><div></div></div>



CODE **ACTIVE SOCKS**



BLACK
BLUE



SOCKS

TO EACH HIS OWN

Socks are a fundamental element in completing sports clothing. Weather conditions, the sport played and appearance are all variables that make the choice of socks subjective and extremely important.

We are proud to be able to offer multi-sport products dedicated to cycling and motorcycling in our SOCKS range. Quality, design and attention to the finest detail ensure that once you have put on a pair of SIXS socks you will fall in love with them.

Fabrics and technologies specially designed to make these products the best on the market: seamless design with no pressure points. Moreover, the **BreathFit Socks** fabric does not retain perspiration and always leaves the skin dry, in this way preventing bacteria and irritations from proliferating.

COMFORT AT YOUR FEET

BREATHFIT SOCKS

BreathFit fabric socks: thanks to to the polypropylene fiber, the skin is always dry and wrapped so that unpleasant odors and annoying irritations due to an accumulation of perspiration and friction do not form.

FEATURES	SIZES
Breathability: <div><div></div><div></div><div></div><div></div><div></div></div>	I (36/39)
Insulation: <div><div></div><div></div><div></div><div></div><div></div></div>	II (40/43)
Wind protection: <div><div></div><div></div><div></div><div></div><div></div></div>	III (44/47)
H ₂ O protection: <div><div></div><div></div><div></div><div></div><div></div></div>	
ATTRIBUTES	WEATHER
<div><div></div><div></div><div></div></div>	<div><div></div><div></div><div></div></div>

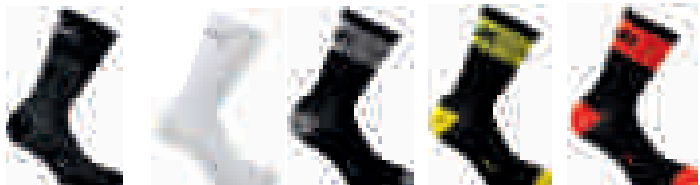


CODE **FANT S**



BLACK
CARBON

CODE **SHORT LOGO**



BLACK
CARBON
BLACK

WHITE
CARBON
WHITE

BLACK
GREY

BLACK
YELLOW

BLACK
RED



BLACK
BLUE

BLACK
ITALY FLAG






MED-COMP BREATHFIT SOCKS

Short sock (19cm) in BreathFit Socks fabric enriched with a special weave stitch that makes them stretchier and more compressive on the calf. The terrycloth toe cushions and improves insulation on the toes. The seamless design and comfortable cuff on the calf make this product exceedingly comfortable and high performing.




FEATURES

Breathability:	■ ■ ■ ■ ■
Insulation:	■ ■ ■ ■ ■
Wind protection:	■ ■ ■ ■ ■
H ₂ O protection:	■ ■ ■ ■ ■

ATTRIBUTES



WEATHER



SIZES

I (36/39)
II (40/43)
III (44/47)





AERO SOCKS

The AeroTech, 23cm high, favors aerodynamics and improve sports performance. It is enriched with 3D foam inserts on the neck and side of the foot that help circulation and promote comfort in the pressure points of the shoe, increasing oxygenation and therefore the ability to express power on the pedals. Made of Meryl Skinlife® antibacterial yarn.




FEATURES

Breathability:	■ ■ ■ ■ ■
Insulation:	■ ■ ■ ■ ■
Wind protection:	■ ■ ■ ■ ■
H ₂ O protection:	■ ■ ■ ■ ■

ATTRIBUTES



WEATHER



SIZES

I (36/39)
II (40/43)
III (44/47)



CODE **P200 SOCKS**

CODE **AEROTECH**



SHORT MERINO WOOL SOCKS

These socks are incredibly comfortable and specific for the winter season. The elastic fiber hugs the entire foot and runs all the way down the sock to provide light pressure.

Added to it is merino wool, with its very high insulating capacity, and polypropylene, which increases its abrasion resistance.

FEATURES

Breathability:	<div><div></div><div></div><div></div><div></div><div></div></div>
Insulation:	<div><div></div><div></div><div></div><div></div><div></div></div>
Wind protection:	<div><div></div><div></div><div></div><div></div><div></div></div>
H ₂ O protection:	<div><div></div><div></div><div></div><div></div><div></div></div>

SIZES

- I (36/39)
- II (40/43)
- III (44/47)

ATTRIBUTES



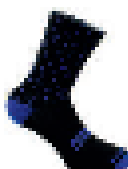
WEATHER



CODE **MERINOS SOCKS**



BLACK
RED STRIPES



BLACK
BLUE LINE



RESOLVWEAR

Washes, regenerates and sanitizes all types of technical sportswear and accessories in synthetic and natural fibres.
Designed to be effective on typical sports dirt at low temperatures (30°).
Removes unpleasant odours and gives a particular fragrance which remains for a long time with deodorant effect.

AVAILABLE IN 2 SIZES:

- 1l bottle for 20/25 washes (for normal washing machine use)
- Portable “travel” 100ml bag for 2/3 washes, also convenient in hotels and accommodation facilities

AVAILABLE IN 2 FRAGRANCES:

- FRAGRANCEX
The famous original fragrance of SIXS garments, developed in collaboration specifically to renew the fragrance at each wash and enriched with molecules that keep the technical fibres soft and intact without using fabric softener and which reduce the formation of bad smells during wearing.
- RESOLVWEAR FRAGRANCE ACTIVE
Intense fresh and menthol perfume, gives the composition an energizing tone, full of vitality.

SUGGESTIONS FOR USE:

- To wash in the washing machine: use a specific program for sportswear at 30°. Depending on the degree of dirt choose a more energetic and longer program in the case of difficult dirt or a lighter and faster program in the case of light dirt
- Hand washing: dilute in lukewarm water, leave garments to soak for 30 minutes then rinse thoroughly
- In case of stubborn stains apply a few drops of product directly on stains before washing
- Dry in the shade and away from heat sources

TECHNICAL SPECIFICATIONS:

- Specific product for synthetic fabrics and micro-fibres, maintains the fibres soft and protected
- Contains “Colour Saver”: respects and maintains the original colours of the technical garments
- Do not add fabric softener (it clings to the fabrics and is therefore in contact with the skin and could cause skin reactions)

RESOLVWEAR SIXS

1 l - 6-pc package



RESOLVWEAR SIXS

100 ml - 48-pc package



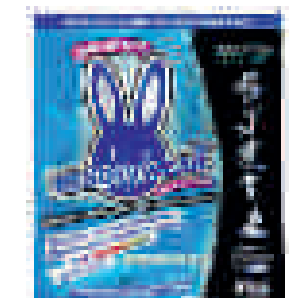
RESOLVWEAR

1 l - 6-pc package



RESOLVWEAR

100 ml - 48-pc package



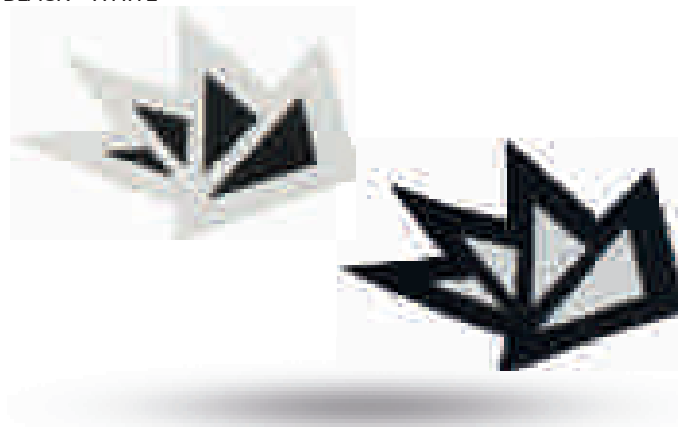
LOGO STICKER

75x50 mm
BLACK - WHITE



SYMBOL STICKER

65x65 mm
BLACK - WHITE



WATER BOTTLE

550 ml



CORPORATE CAP

One size
BLACK - WHITE



CORPORATE T-SHIRT

100% cotton
SIZES: XS - S - M - L - XL - XXL
BLACK



CORPORATE LANYARD

100% nylon
BLACK

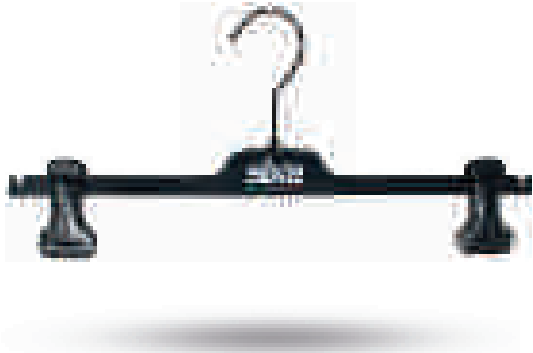


POP

COAT HANGERS



PANT HANGERS



SHOPPING BAG

32x13x42,5 cm



SMALL FLAG

40x225 cm



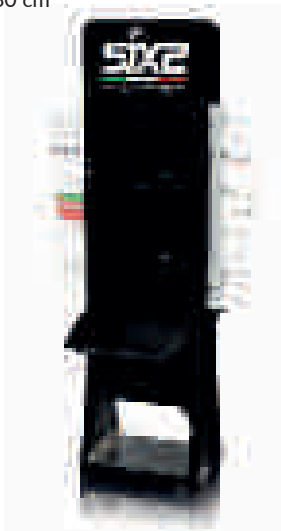
COUNTER DISPLAY

58x20x53 cm



FLOOR DISPLAY

49x35x180 cm



STAVED PANEL

120x240 cm



NON-WOVEN FABRIC BANNER

50 m



BIG FLAG

h 450 cm



RIBBON



SQUARE TENT



INFLATABLE BALLOON



INFLATABLE STAND



INFLATABLE ARCH



SIZE TABLES

FIT/SIZES

SIXS clothing is designed to fit the athlete's body snugly, like a second skin, enveloping and protecting it without applying too much pressure.

Owing to the extraordinary stretch of the Carbon Underwear® fabric and the outstanding fit, choosing the right size allows for a considerable tolerance. In any case, if you have never worn SIXS, we recommend that you stop in at an authorized reseller to ascertain your correct size.

SIXS products are technical items, and are not suitable for casual use.



Merinos Wool

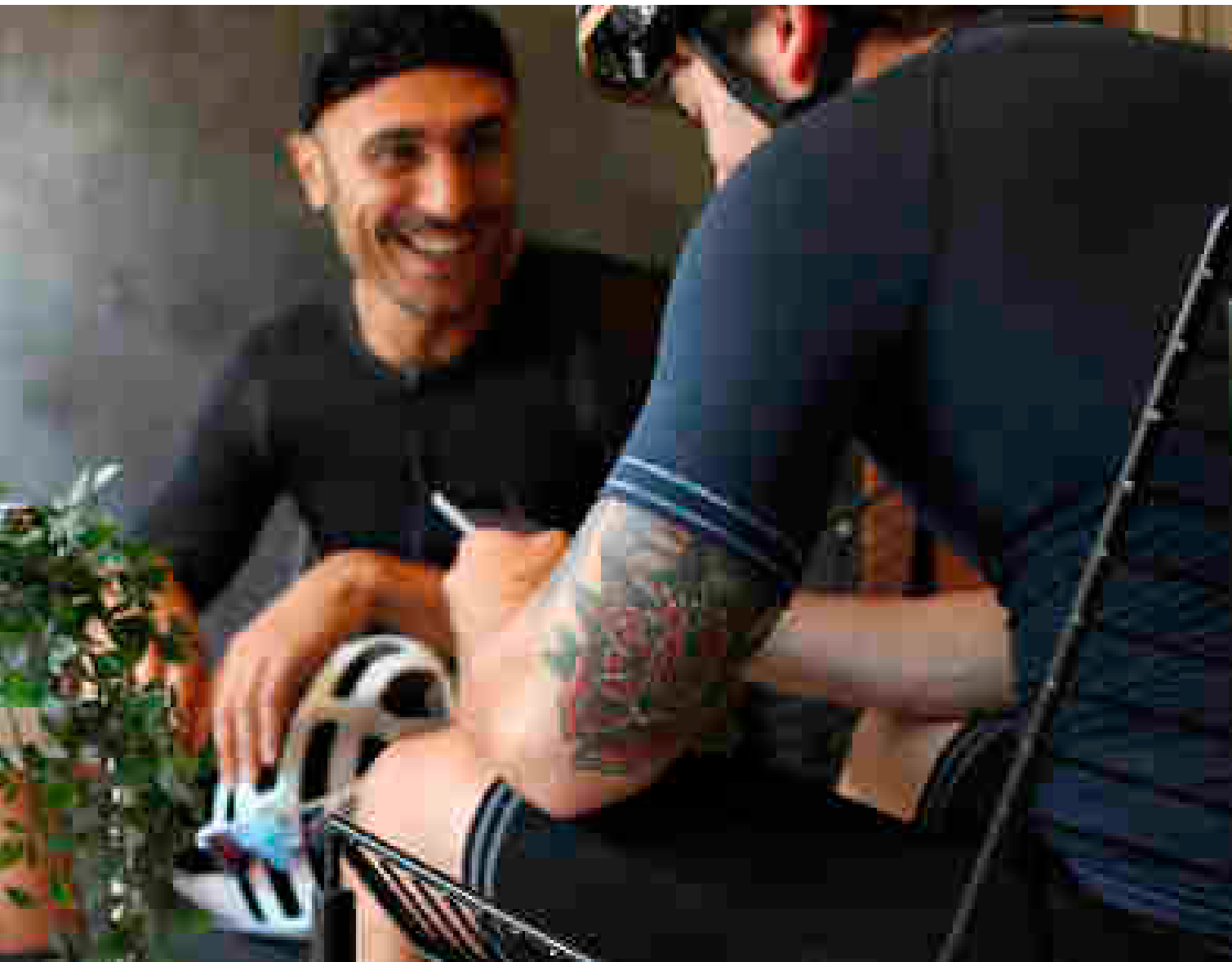
Size	Height		Weight	
S/M	155-175 cm	5ft 1in - 5ft 9in	55-75 kg	121-165 lb
L/XL	170-190 cm	5ft 7in - 6ft 3in	70-85 kg	154-187 lb
XXL/3XL	185-200 cm	6ft 1in - 6ft 7in	85-100 kg	187-220 lb

Underwear, Underwear Light, Underwear Warm*, Activewear, Pro-Tech

Size	Height		Weight	
XS	150-165 cm	4ft 11in - 5ft 5in	40-60 kg	88-132 lb
S	160-175 cm	5ft 3in - 5ft 9in	50-70 kg	110-154 lb
M	170-185 cm	5ft 7in - 6ft	60-80 kg	132-176 lb
L	180-190 cm	5ft 10in - 6ft 3in	70-90 kg	154-198 lb
XL	185-195 cm	6ft - 6ft 5in	80-100 kg	176-220 lb
XXL	190-200 cm	6ft 3in - 6ft 7in	90-110 kg	198-242 lb
BIG SIZE**	>200 cm	>6ft 7 in	> 100 kg	> 242 lb

Size	Height		Weight	
XS/S**	150-175 cm	5ft - 5ft 9in	40-70 kg	88-154 lb
M/L**	170-190 cm	5ft 7in - 6ft 3in	60-90 kg	132-198 lb
XL/XXL**	185-200 cm	6ft - 6ft 7in	80-110 kg	176-242 lb

* Underwear Warm product fit with slightly less stretch, so one size smaller is recommended so that the product properly adheres to the body
** size available only in some products



Socks

SIZE	Size EU	Size USA\M	Size USA\W	Size UK	base of the foot
I	36/39	4/6.5	5/7.5	3/5.5	23/26 cm
II	40/43	7/9.5	8/10.5	6/9	26.5/28.5 cm
III	44/47	10/13	11/14	9.5/12	>29 cm

Compression *

Size	Calf circumference	
S	32/38 cm	13ft - 15ft
M	36/43 cm	14ft - 17ft
L	41/47 cm	16ft - 19ft



* applies to CALF and RECOVERY SOCKS products

Gloves and Glove Liners

Size	Hand circumference	Hand circumference
S	<19 cm	<7ft
M	20-22 cm	8ft - 9ft
L	22-24 cm	9ft - 9.4ft
XL	>24 cm	>9.4ft

BRAND AMBASSADORS



ELENA MARTINELLO

📷 : @elena.martinello

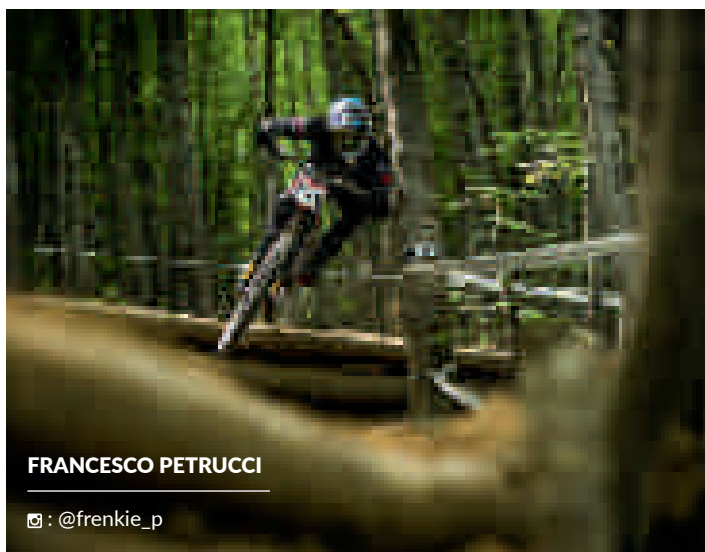
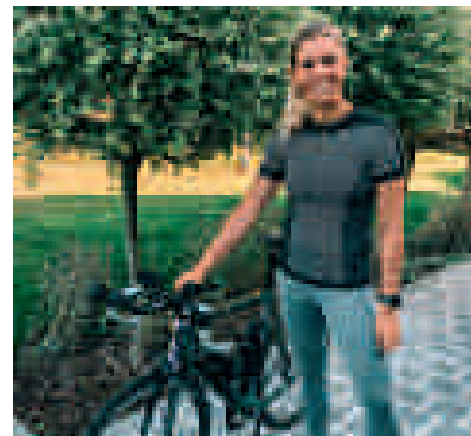
MICHIEL MULDER

📷 : @bike.and.beer



ANTWERP TRI GIRLS

📷 : @antwerptrigirls



FRANCESCO PETRUCCI

📷 : @frenkie_p



**ANDREA
PIRAZZOLI**

📷 : @fagia118

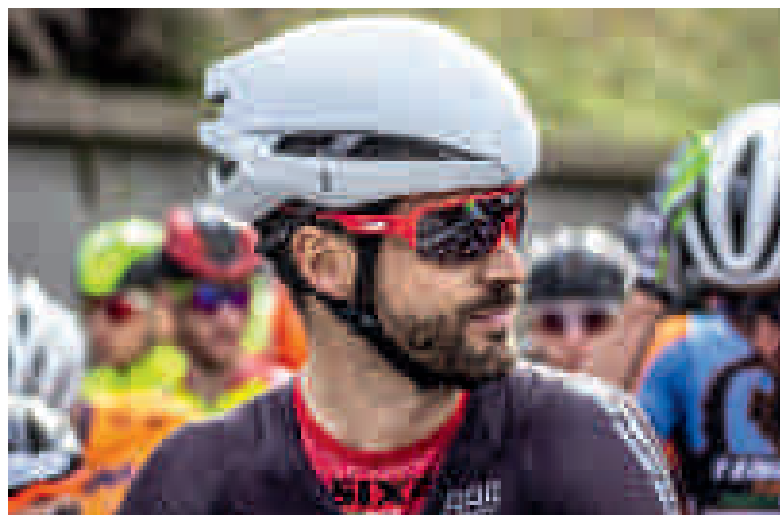


ALICE MARIA ARZUFFI

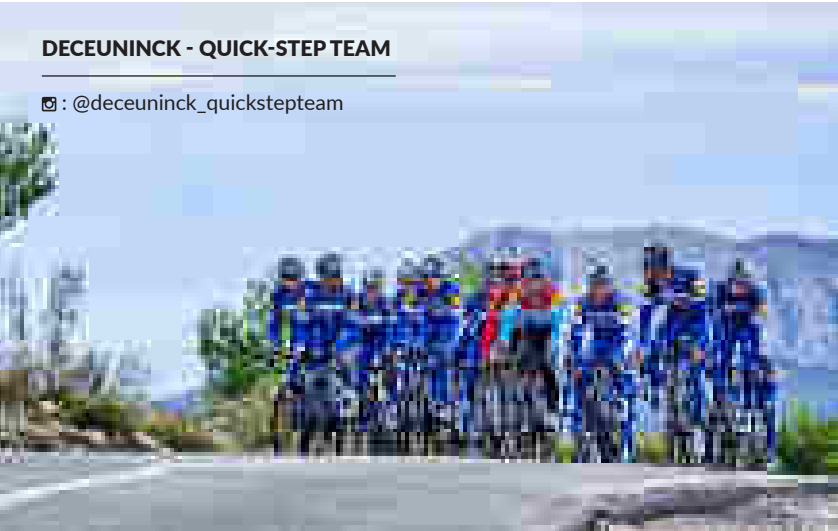
📷 : @alicemarzuffi

ANDREA TIBERI

📷 : @irontibi



BRAND AMBASSADORS



DECEUNINCK - QUICK-STEP TEAM

@deceuninck_quickstepteam



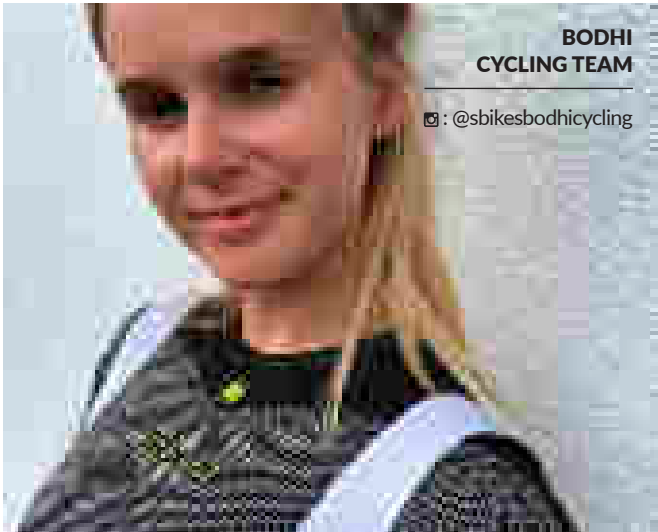
LOTTO SOUDAL TEAM

@lotto_soudal



ALIA MARCELLINI

@aliamarcellini



BODHI CYCLING TEAM

@sbikesbodhicycling



FATIMA BERTONI

@bertoniiii



GRETA SEIWALD

@gretaseiwald

LUCAS EAMON

@eamon_lucas







CYCLING

