



EMT

ELECTRIC MOTION
CP-MOTORSPORTS.DE

EUP
ESCAPE
2021

EPURE RANGE 202i



EPURE LITE

The Epure **Lite** is the standard model of the Epure family, but it does benefit of all its technology.

The Lite is good for all those who want to practice trial or ride off-road, with a silent motorbike that requires zero maintenance.

Private individuals, training schools or off-road centers, the Epure Lite will please a large crowd of enthusiasts.

FROM INITIATION...



MAX SPEED*
65 KM/H

RANGE*
43 KM

WEIGHT
74 KG

TORQUE
600 NM

ROAD LEGAL
125 CM³

...TO PERFORMANCE

*Range and top speed vary based on riding style and drivetrain configuration. Speed of 65 km/h on Off Road utilisation on private land .

EPURE LITE

TECHNICAL SHEET

| | |
|------------------|-----------------------|
| FRAME | 15CDV6 |
| FRONT BRAKE | Disc 182 mm 4 pistons |
| REAR BRAKE | Disc 150 mm 2 pistons |
| FRONT RIMS | Morad Trial 1.6"x21" |
| REAR RIMS | Morad Trial 2.15"x18" |
| TIRES | Michelin X11 |
| FRONT SUSPENSION | Tech 175 mm |
| REAR SUSPENSION | R16V 170 mm |

BATTERY

| | |
|---------------------------|---------|
| ENERGY | Li-ion |
| VOLTAGE | 50.4 V |
| CAPACITY | 1875 Wh |
| WEIGHT | 10,5 kg |
| CHARGING TIME | 15 A |
| LIFE CYCLE | 3h00 |
| MINI CHARGING TEMPERATURE | 1000 |
| | 0°C |

ENGINE

| | |
|---------------|-------|
| NOMINAL POWER | 6 Kw |
| PEAK POWER | 11 Kw |

DIMENSIONS

| | |
|------------------|---------|
| SEAT HEIGHT | 670 mm |
| WHEEL BASE | 1325 mm |
| GROUND CLEARANCE | 320 mm |
| FOOTREST HEIGHT | 360 mm |
| WIDTH | 825 mm |

SERIES EQUIPMENT

| | |
|------|---|
| MAPS | 3 |
|------|---|

OPTIONS

| |
|-----------------------------------|
| PRB (included on presented model) |
| TRIAL TRAINING MAPS |
| FLYWHEEL |
| CHARGER 25A (2h15) |



NEW

- Geometry
- Clamps
- Battery software
- Optimized motor
- More power at mid & high RPM
- More torque
- Battery charging socket
- Mapping
- Hebo grips
- Graphic design
- Aluminium chain tensionneur
- Black frame & swing arm



Black mat frame.



Road legal kit (125cc).

EPURE SPORT

Designed for people that looking for big sensations, the Epure **Sport** is pure performance...

Power, battery lifetime, torque, speed, weight... the Sport model has never been that improved before.

The Epure Sport proves that an electric motorcycle can be as performing as the best combustion-powered ones. Without any compromise.

EMOTION AND...



MAX SPEED*
65 KM/H

AUTONOMY*
43 KM

WEIGHT
71 KG

TORQUE
600 NM

ROAD LEGAL
125 CM³

...SENSATION

*Range and top speed vary based on riding style and drivetrain configuration. Speed of 65 km/h on Off Road utilisation on private land .

EPURE SPORT

TECHNICAL SHEET

| | |
|------------------|------------------------|
| FRAME | 15CDV6 |
| FRONT BRAKE | Disc 182 mm 4 pistons |
| REAR BRAKE | Disc 150 mm 2 pistons |
| FRONT RIMS | Morad Trial 1.6"x21" |
| REAR RIMS | Morad Trial 2.15"x18" |
| TIRES | Michelin X11 |
| FRONT SUSPENSION | Alu Racing Tech 175 mm |
| REAR SUSPENSION | R16V 170 mm |

BATTERY

| | |
|---------------------------|---------|
| ENERGY | Li-ion |
| VOLTAGE | 50.4 V |
| CAPACITY | 1875 Wh |
| WEIGHT | 10,5 kg |
| CHARGING TIME | 15 A |
| LIFE CYCLE | 3h00 |
| MINI CHARGING TEMPERATURE | 1000 |
| | 0°C |

ENGINE

| | |
|---------------|-------|
| NOMINAL POWER | 6 Kw |
| PEAK POWER | 11 Kw |

DIMENSIONS

| | |
|------------------|---------|
| SEAT HEIGHT | 670 mm |
| WHEEL BASE | 1325 mm |
| GROUND CLEARANCE | 320 mm |
| FOOTREST HEIGHT | 360 mm |
| WIDTH | 825 mm |

SERIES EQUIPMENT

| | |
|------|---|
| MAPS | 3 |
| PRB | |

OPTIONS

| |
|---------------------------------------|
| LED KIT (included on presented model) |
| TRIAL TRAINING MAPS |
| FLYWHEEL |
| CHARGER 25A (2h15) |

NEW

- Tech Aluminium Racing fork
- Geometry
- Clamps
- Battery software
- Optimized motor
- More power at mid & high RPM
- More torque
- Battery charging socket
- Mapping
- Hebo grips
- Graphic design
- Aluminium chain tensionneur
- Black frame & swing arm





LED kit : not homologated for road use (option).



Battery with new charging socket cover.



EPURE RACE

This is the first homologated electric trial motorcycle ever sold equipped with a diaphragm clutch.

Imagine one of the lightest trial motorcycles on the market, add the torque of an electric powertrain and finally a high performance diaphragm clutch...

The 2021 model has even more power at high RPM.

The Epure **Race** has no limit... except for its pilot's.

E TRIAL IS ENTERING...



MAX SPEED*
70 KM/H

RANGE*
43 KM

WEIGHT
75 KG

TORQUE
600 NM

ROAD LEGAL
125 CM³

RANGE RETAIL PRICES

Please find below our 2021 prices.
All our models are road legal in Europe.

EPURE RANGE

| | OFF ROAD | ROAD LEGAL (EU) |
|--------------------|-----------|-----------------|
| EPURE LITE | 6050,00 € | 6190,00 € |
| EPURE SPORT | 7250,00 € | 7390,00 € |
| EPURE RACE | 7950,00 € | 8090,00 € |

ESCAPE RANGE

| | | |
|--------------------|-----------|-----------|
| ESCAPE LITE | 6690,00 € | 6830,00 € |
| ESCAPE | 7550,00 € | 7690,00 € |
| ESCAPE "A" | 8350,00 € | 8490,00 € |

Price do not include transport, taxes.
Prices at July 27th 2020.

...A NEW ERA

*Range and top speed vary based on riding style and drivetrain configuration. Speed of 70 km/h on Off Road utilisation on private land .

TECHNICAL SHEET

| | |
|------------------|------------------------|
| FRAME | 15CDV6 |
| FRONT BRAKE | Disc 182 mm 4 pistons |
| REAR BRAKE | Disc 150 mm 2 pistons |
| FRONT RIMS | Morad Trial 1.6"x21" |
| REAR RIMS | Morad Trial 2.15"x18" |
| TIRES | Michelin X11 |
| FRONT SUSPENSION | Alu Racing Tech 175 mm |
| REAR SUSPENSION | R16V 170 mm |

BATTERY

| | |
|---------------------------|---------|
| ENERGY | Li-ion |
| VOLTAGE | 50.4 V |
| CAPACITY | 1875 Wh |
| WEIGHT | 10,5 kg |
| CHARGING TIME | 15 A |
| LIFE CYCLE | 3h00 |
| MINI CHARGING TEMPERATURE | 1000 |
| | 0°C |

ENGINE

| | |
|---------------|-------|
| NOMINAL POWER | 6 Kw |
| PEAK POWER | 11 Kw |

DIMENSIONS

| | |
|------------------|---------|
| SEAT HEIGHT | 670 mm |
| WHEEL BASE | 1325 mm |
| GROUND CLEARANCE | 320 mm |
| FOOTREST HEIGHT | 360 mm |
| WIDTH | 825 mm |

SERIES EQUIPMENT

| | |
|------------------|-----------|
| DIAPHRAGM CLUTCH | Hydraulic |
| FLYWHEEL | |

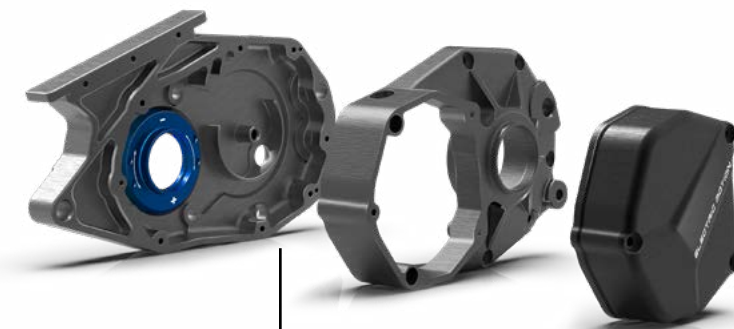
OPTIONS

| | |
|---------------------|--|
| FRB | |
| TRIAL TRAINING MAPS | |
| CHARGER 25A (2h15) | |



NEW

- Tech Aluminium Racing fork
- Geometry
- Clamps
- Battery software
- Optimized motor
- More power at mid & high RPM
- More torque
- Battery charging socket
- Mapping
- Hebo grips
- Graphic design
- Aluminium chain tensioneur
- Black frame & swing arm



CNC parts, hydraulic diaphragm clutch.



EM pilot : Gaël CHATAGNO
1er French Championship S1 (Auron)
1er World Championship Trial E (Isola 2000)



Aluminium Racing Tech® fork





Pictures by Laurie Labissy



ESCAPE RANGE 202i





ESCAPE **LITE**

The Escape **Lite** offers exceptional value for money, equipped with a 1.9Kwh battery, it opens the doors for everyone to discover silent off-road excursions ...

New model of the Escape family, discover the lines and the smart and casual design of our Escape Lite 2021.

Reach across the borders and live the adventure with the Escape Lite.

EMOTION AND...



MAX SPEED*
75 KM/H

RANGE*
43 KM

WEIGHT
75 KG

TORQUE
450 NM

ROAD LEGAL
125 CM³

...SENSATION

*Range and top speed vary based on riding style and drivetrain configuration. Speed of 75 km/h on Off Road utilisation on private land .

ESCAPE^{LITE}

TECHNICAL SHEET

| | |
|------------------|-----------------------|
| FRAME | 15CDV6 |
| FRONT BRAKE | Disc 182 mm 4 pistons |
| REAR BRAKE | Disc 150 mm 2 pistons |
| FRONT RIMS | Morad Trial 1.6"x21" |
| REAR RIMS | Morad Trial 2.15"x18" |
| TIRES | Michelin X11 |
| FRONT SUSPENSION | Tech 175 mm |
| REAR SUSPENSION | R16V 170 mm |

BATTERY

| | |
|---------------------------|---------|
| ENERGY | Li-ion |
| VOLTAGE | 50.4 V |
| CAPACITY | 1875 Wh |
| WEIGHT | 10,5 kg |
| CHARGING TIME | 15 A |
| LIFE CYCLE | 3h00 |
| MINI CHARGING TEMPERATURE | 1000 |
| | 0°C |

ENGINE

| | |
|---------------|-------|
| NOMINAL POWER | 6 Kw |
| PEAK POWER | 11 Kw |

DIMENSIONS

| | |
|------------------|---------|
| SEAT HEIGHT | 820 mm |
| WHEEL BASE | 1325 mm |
| GROUND CLEARANCE | 320 mm |
| FOOTREST HEIGHT | 360 mm |
| WIDTH | 825 mm |

SERIES EQUIPMENT

| | |
|--------------------------|---|
| MAPS | 3 |
| ESCAPE TOP COVER / SEAT | |
| ESCAPE TOP COVER SUPPORT | |

OPTIONS

| |
|-----------------------------------|
| PRB (included on presented model) |
| LED KIT |
| TRIAL TRAINING MAPS |
| FLYWHEEL |
| CHARGER 25A (2h15) |



NEW

- Geometry
- Clamps
- Battery software
- Optimized motor
- More power at mid & high RPM
- More torque
- Battery charging socket
- Mapping
- Hebo grips
- Top battery cover & seat
- Graphic design
- Aluminium chain tensioneur
- Black frame & swing arm



Black mat frame.



EM rider : Christophe BRUAND



Road legal kit (125cc).



ESCAPE

The **Escape** is the perfect bike to ride off-road from Electric Motion.

Extend your boundaries and discover new horizons with the capabilities and performances of the new Escape.

New smart and casual design, an improved seat for a better riding position, reach across the borders and live the adventure with the Escape...

ESCAPE...



MAX SPEED*
75KM/H

RANGE*
61KM

WEIGHT
77KG

TORQUE
450NM

ROAD LEGAL
125CM³

...YOURSELF

*Range and top speed vary based on riding style and drivetrain configuration. Speed of 75 km/h on Off Road utilisation on private land .

ESCAPE

TECHNICAL SHEET

| | |
|------------------|-----------------------|
| FRAME | 15CDV6 |
| FRONT BRAKE | Disc 182 mm 4 pistons |
| REAR BRAKE | Disc 150 mm 2 pistons |
| FRONT RIMS | Morad Trial 1.6"x21" |
| REAR RIMS | Morad Trial 2.15"x18" |
| TIRES | Michelin X11 |
| FRONT SUSPENSION | Tech 175 mm |
| REAR SUSPENSION | R16V 170 mm |

BATTERY

| | |
|---------------------------|---------|
| ENERGY | Li-ion |
| VOLTAGE | 50.4 V |
| CAPACITY | 2620 Wh |
| WEIGHT | 14 kg |
| CHARGING TIME | 15 A |
| LIFE CYCLE | 4h15 |
| MINI CHARGING TEMPERATURE | 1000 |
| | 0°C |

ENGINE

| | |
|---------------|-------|
| NOMINAL POWER | 6 Kw |
| PEAK POWER | 11 Kw |

DIMENSIONS

| | |
|------------------|---------|
| SEAT HEIGHT | 820 mm |
| WHEEL BASE | 1325 mm |
| GROUND CLEARANCE | 320 mm |
| FOOTREST HEIGHT | 360 mm |
| WIDTH | 825 mm |

SERIES EQUIPMENT

| | |
|-------------------------|---|
| MAPS | 3 |
| ESCAPE TOP COVER / SEAT | |

OPTIONS

| |
|---|
| LED KIT (Off Road rear kit included on presented model) |
| TRIAL TRAINING MAPS |
| FLYWHEEL |
| CHARGER 25A (2h15) |



NEW

- Geometry
- Clamps
- Battery software
- Optimized motor
- More power at mid & high RPM
- More torque
- Battery charging socket
- Mapping
- Hebo grips
- Top battery cover & seat
- Graphic design
- Aluminium chain tensioneur
- Black frame & swing arm



Escape battery
with large range
(2.6 kWh).



EM rider : Christophe BRUAND

New design for the battery
top cover and the seat.





ESCAPE "R"

The **Escape "R"** is the sport model with great range.

With ultra high-end equipment, a "Race" design, l'Escape "R" is geared towards off-road racing.

With this brand new model, the adventure is now taken to the extreme.

Cross the border and live the adventure with the Escape "R"...

LIVE...



MAX SPEED*
70 KM/H

RANGE*
61 KM

WEIGHT
85 KG

TORQUE
600 NM

ROAD LEGAL
125 CM³

RANGE RETAIL PRICES

Please find below our 2021 prices.
All our models are road legal in Europe.

EPURE RANGE

| | OFF ROAD | ROAD LEGAL (EU) |
|--------------------|-----------|-----------------|
| EPURE LITE | 6050,00 € | 6190,00 € |
| EPURE SPORT | 7250,00 € | 7390,00 € |
| EPURE RACE | 7950,00 € | 8090,00 € |

ESCAPE RANGE

| | | |
|--------------------|-----------|-----------|
| ESCAPE LITE | 6690,00 € | 6830,00 € |
| ESCAPE | 7550,00 € | 7690,00 € |
| ESCAPE "R" | 8350,00 € | 8490,00 € |

Price do not include transport, taxes.
Prices at July 27th 2020.

...THE ADVENTURE

*Range and top speed vary based on riding style and drivetrain configuration. Speed of 70 km/h on Off Road utilisation on private land .

ESCAPE⁴

TECHNICAL SHEET

| | |
|------------------|------------------------|
| FRAME | 15CDV6 |
| FRONT BRAKE | Disc 182 mm 4 pistons |
| REAR BRAKE | Disc 150 mm 2 pistons |
| FRONT RIMS | Morad Trial 1.6"x21" |
| REAR RIMS | Morad Trial 2.15"x18" |
| TIRES | Michelin X11 |
| FRONT SUSPENSION | Alu Racing Tech 175 mm |
| REAR SUSPENSION | R16V 170 mm |

BATTERY

| | |
|---------------------------|---------|
| ENERGY | Li-ion |
| VOLTAGE | 50.4 V |
| CAPACITY | 2620 Wh |
| WEIGHT | 14 kg |
| CHARGING TIME | 15 A |
| LIFE CYCLE | 4h15 |
| MINI CHARGING TEMPERATURE | 1000 |
| | 0°C |

ENGINE

| | |
|---------------|-------|
| NOMINAL POWER | 6 Kw |
| PEAK POWER | 11 Kw |

DIMENSIONS

| | |
|------------------|---------|
| SEAT HEIGHT | 820 mm |
| WHEEL BASE | 1325 mm |
| GROUND CLEARANCE | 320 mm |
| FOOTREST HEIGHT | 360 mm |
| WIDTH | 825 mm |

SERIES EQUIPMENT

| | |
|-------------------------|-----------|
| MAPS | 3 |
| DIAPHRAGM CLUTCH | Hydraulic |
| ESCAPE TOP COVER / SEAT | |
| FLYWHEEL | |

OPTIONS

| | |
|---------------------|--|
| FRB | |
| TRIAL TRAINING MAPS | |
| CHARGER 25A (2h15) | |

NEW

- Aluminium Racing Teck® fork
- Geometry
- Clamps
- Battery software
- Optimized motor
- More power at mid & high RPM
- More torque
- Battery charging socket
- Mapping
- Hebo grips
- Top battery cover & seat
- Graphic design
- Aluminium chain tensioneur
- Black frame & swing arm



New battery top cover and seat design.



Cockpit (battery level indicator, led maps).



EM rider : Christophe BRUAND

Aluminium Racing Tech[®] fork





Pictures by Laurie Labissy



WEIGHT **74**KG
MAX SPEED **65**KM/H
RANGE **43**KM
TORQUE **600**NM
ROAD LEGAL **125**CM3



WEIGHT **71**KG
MAX SPEED **65**KM/H
RANGE **43**KM
TORQUE **600**NM
ROAD LEGAL **125**CM3



WEIGHT **75**KG
MAX SPEED **70**KM/H
RANGE **43**KM
TORQUE **600**NM
ROAD LEGAL **125**CM3



WEIGHT **75**KG
MAX SPEED **75**KM/H
RANGE **43**KM
TORQUE **450**NM
ROAD LEGAL **125**CM3



WEIGHT **80**KG
MAX SPEED **75**KM/H
RANGE **61**KM
TORQUE **450**NM
ROAD LEGAL **125**CM3



WEIGHT **85**KG
MAX SPEED **70**KM/H
RANGE **61**KM
TORQUE **600**NM
ROAD LEGAL **125**CM3

FRAME
FRONT BRAKE
REAR BRAKE
FRONT RIM
REAR RIM
TIRES
FRONT SUSPENSION
REAR SUSPENSION

15CDV6
Disc 182mm 4 pistons
Disc 150mm 2 pistons
Morad Trial 1,6"x21"
Morad Trial 2,15"x18"
Michelin® X11
Tech® 175mm
R16V 170mm

15CDV6
Disc 182mm 4 pistons
Disc 150mm 2 pistons
Morad Trial 1,6"x21"
Morad Trial 2,15"x18"
Michelin® X11
Alu Racing Tech® 175mm
R16V 170mm

15CDV6
Disc 182mm 4 pistons
Disc 150mm 2 pistons
Morad Trial 1,6"x21"
Morad Trial 2,15"x18"
Michelin® X11
Alu Racing Tech® 175mm
R16V 170mm

NEW 15CDV6
Disc 182mm 4 pistons
Disc 150mm 2 pistons
Morad Trial 1,6"x21"
Morad Trial 2,15"x18"
Michelin® X11
Tech® 175mm
R16V 170mm

15CDV6
Disc 182mm 4 pistons
Disc 150mm 2 pistons
Morad Trial 1,6"x21"
Morad Trial 2,15"x18"
Michelin® X11
Tech® 175mm
R16V 170mm

NEW 15CDV6
Disc 182mm 4 pistons
Disc 150mm 2 pistons
Morad Trial 1,6"x21"
Morad Trial 2,15"x18"
Michelin® X11
Alu Racing Tech® 175mm
R16V 170mm

ENERGY
VOLTAGE
CAPACITY
WEIGHT
CHARGER
CHARGING TIME
LIFE CYCLE
MINI CHARG. TEMP.

Li-ion
50,4 V
1875 Wh
10,5 kg
15 A
3h20
1000
0°C

Li-ion
50,4 V
1875 Wh
10,5 kg
15 A
3h20
1000
0°C

Li-ion
50,4 V
1875 Wh
10,5 kg
15 A
3h20
1000
0°C

Li-ion
50,4 V
1875 Wh
10,5 kg
15 A
3h20
1000
0°C

Li-ion
50,4 V
2620 Wh
14 kg
15 A
4h15
1000
0°C

Li-ion
50,4 V
2620 Wh
14 kg
15 A
4h15
1000
0°C

NOMINAL POWER
PEAK POWER

6 Kw
11 Kw

6 Kw
11 Kw

6 Kw
11 Kw

6 Kw
11 Kw

6 Kw
11 Kw

6 Kw
11 Kw

SEAT HEIGHT
WHEEL BASE
GROUND CLEARANCE
FOOTREST HEIGHT
WIDTH

670mm
1325mm
320mm
360mm
825mm

670mm
1325mm
320mm
360mm
825mm

670mm
1325mm
320mm
360mm
825mm

820mm
1325mm
320mm
360mm
825mm

820mm
1325mm
320mm
360mm
825mm

820mm
1325mm
320mm
360mm
825mm

MAPS

3

3

3

3

3

3

SERIES EQUIPMENT

-

PRB

Hydraulic controlled
diaphragm clutch
Flywheel

Escape top cover/seat
Escape top cover support

Escape top cover/seat
PRB

Escape top cover/seat
Hydraulic controlled
diaphragm clutch
Flywheel

OPTIONS

PRB
Trial training maps
Flywheel
Charger 25 A (2h15)

LED kit
Trial training maps
Flywheel
Charger 25 A (2h15)

FRB
Trial training maps
Charger 25 A (2h15)

PRB
LED kit
Trial training maps
Flywheel
Charger 25 A (2h15)

LED kit
Trial training maps
Flywheel
Charger 25 A (2h15)

FRB
Trial training maps
Charger 25 A (2h15)



ELECTRIC MOTION
ZAC Via Domitia
280 Rue du Trident
34740 Vendargues, FRANCE

www.electric-motion.fr
info@electric-motion.fr

Office : +33 (0)4 67 41 10 90
Mobile : +33 (0)6 87 54 95 64

Follow us on :



CP MOTORSPORTS.DE



Projet cofinancé par le Fonds Européen de Développement Régional



www.nilsyourbike.com

EXCLUSION OF LIABILITY

Please note that this brochure contains photos taken on private property and/or abroad.
The use of these vehicles in a natural environment in your jurisdiction may be prohibited
by the legislation and/or regulations in force in your region, including Article L.362-1
and in accordance with the Environmental Code.

The photos do not contain any contractual character and the potential buyer of this vehicle will remain
solely responsible for the use of the vehicles, as well as for compliance with the legislation and regulations in force.
Electric Motion draws the attention of all motorcyclists to the importance of wearing the prescribed protective equipment
(approved helmet, gloves, jacket, pants and boots) and the need to drive responsibly,
in accordance with the traffic regulations.

The purchase and commissioning of a motorcycle requires compliance with the instructions and warnings.
danger of the operating manual.

The motorcycles shown in the picture may differ from the standard model in some details and some are
equipped with optional accessories.

All information on the appearance, performance, dimensions and weights of motorcycles are not contractual
and may contain input or printing errors. They are therefore subject to change.
Please note that model specifications may vary from one country to another.